

# PROSPECTUS 2020



# SATS

Bible-based Christ-centred Spirit-led



# ENDORSEMENTS

Thank you so much to SATS, my excellent lecturers and supervisors. It has been an absolute privilege studying through SATS and I have learnt so much more than just the study material given to me. It has been an incredible journey and I am left much richer because of it.

**Leighann Fiford**

---

I don't know if the students thank you as often as they are supposed to - your service at SATS is wonderful and I thoroughly enjoy the study experience you offer. Things are done in the spirit of excellence! So to you and those around you, I pray that God will bless you in this day and I thank you for your friendly support and hard work!

**Marcel van Niekerk**

---

I would like to express my sincere gratitude and appreciation for your continuous support, feedback and advice during my completion of this course. I value your input and highly regard your closing comments with respect to my final assignment.

**Charmaine Erasmus**

---

The MySATS is perfect. It's very user-friendly and it makes the submission of assignments very easy. To write one's exams there is also a very convenient way to study. Thank you.

**Stiaan van Nieuwenhuizen**

---

I actually heard about SATS through my brother, who was at the time enrolled in the Master's program. I chose SATS because it was distance, Evangelical and very affordable.

**Derek Loseth, USA**

---

I guess to summarize, the things that stood out to me about SATS were: rigorous, inexpensive, nondenominational, online DTh offering, with many diverse students, many whom are really in full-time ministry and serious about the Lord. And basically found it by doing searches along those lines, seeing its name pop up in listings of inexpensive seminars, and reading about it on various online forums.

**Eki Taft, USA**

---

I have been studying with SATS for three years now and it has been the best, most challenging and enriching process. So grateful to SATS and everyone involved for the incredible work you all put in so that we can be enlarged and equipped. I will be forever grateful.

**Anusha Gbwriah**

---

This has been a wonderful experience. I will miss the sessions with the buddies, it was fun but also an extremely powerful learning experience. Their feedback empowered me to do better. I am very grateful for the participation.

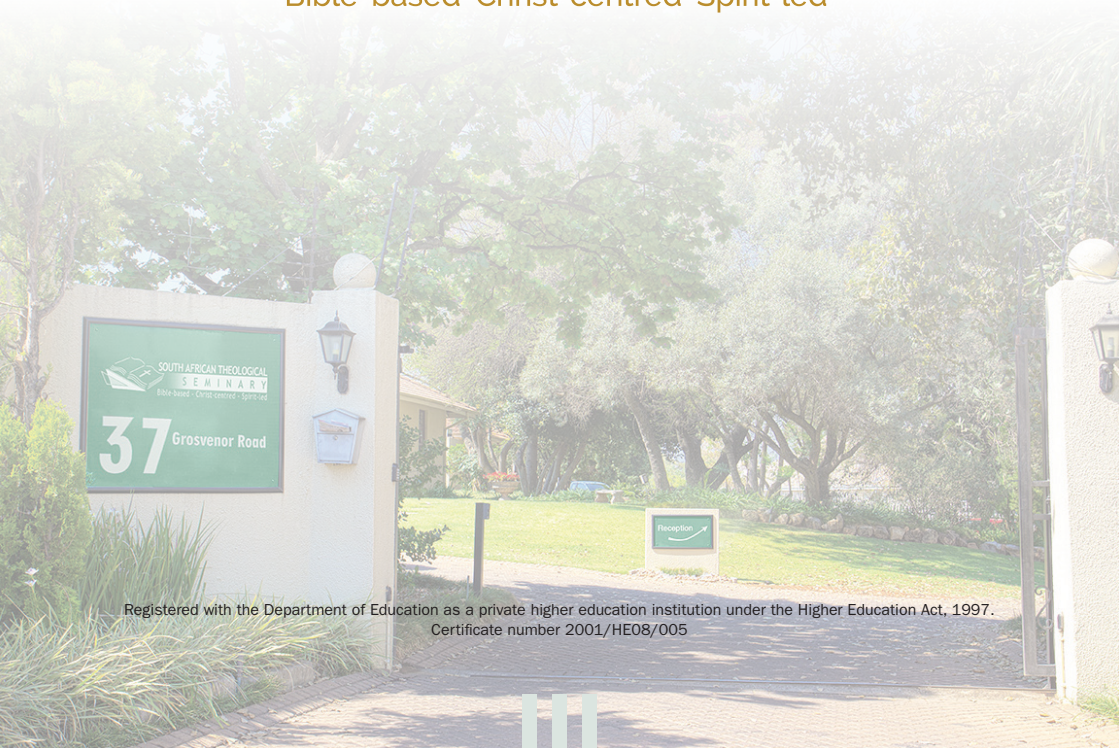
**Dedre Olivier**



PROSPECTUS 2020



Bible-based Christ-centred Spirit-led



Registered with the Department of Education as a private higher education institution under the Higher Education Act, 1997.  
Certificate number 2001/HE08/005



# INDEX

Message from the Principal . . . . .	3
Mission . . . . .	4
Foundational Pillars . . . . .	4
Statement of Faith. . . . .	5
Philosophy . . . . .	5
Board of Directors. . . . .	5
Accreditation and Registration . . . . .	6
Partnering with SATS . . . . .	7
Advantages of Studying At SATS. . . . .	8
MySats. . . . .	9
Staff. . . . .	10
Academic Staff . . . . .	11
Student Support . . . . .	16
Library . . . . .	17
Enrolment Procedure . . . . .	18
Frequently Asked Questions . . . . .	19
Graduation . . . . .	22
Programme Information . . . . .	23
Pricing . . . . .	24
Doctor of Philosophy In Theology . . . . .	27
Master of Theology . . . . .	28
Bachelor of Theology (Honours) . . . . .	30
Bachelor of Theology. . . . .	32
Bachelor of Theology with a Counselling Focus . . . . .	35
Higher Certificate in Christian Life . . . . .	37
Higher Certificate in Christian Counselling . . . . .	40
Course Descriptions . . . . .	44
Contact Details . . . . .	50
Banking Details. . . . .	50
Time Table . . . . .	51



# WELCOME

## **Message from the Principal:**

“The light of the righteous shines brightly” (Prov. 13:9a)

A new year is an opportunity to look back and to look ahead. We look back on 2019 in gratitude for and celebration of God’s continued blessing. We look forward to 2020 with unbridled enthusiasm and optimism, inspired by the deep sense of the Lord’s favour and direction. There are two specific developments at the forefront of our focus for the new year.



*The new MySats platform.* Since we started e-learning in 2008, our MySats platform has been based on Moodle. At the time, it was the best technology for the task. However, a vastly superior technology is now available. As part of our commitment to excellence in online education, from May 2020 we will switch to a whole new MySats platform. The improved base technology will enable SATS to take its online education to a new level of engagement and excellence. If you enjoyed past previous courses, you will love the next generation offerings.

*The new MDiv programme.* We are delighted to announce that we have received accreditation for a Master of Divinity programme. This is a two-year professional master’s degree designed for pastors. Since it does not require a prior degree in theology, it is the ideal gateway into advanced theological and ministerial training for second-career pastors. As with all SATS offerings, the MDiv is 100 per cent online, affording busy pastors and leaders the opportunity to receive high-level training within their ministry context.

In all these things, we remain passionately Bible-based, Christ-centred, and Spirit-led, seeking to harness technology and accreditation to glorify God by equipping his servants to be more effective in their calling.

Dr Kevin Smith





## MISSION

*Our mission is to provide Biblical, Christocentric distance education and training to Christians, and leaders in particular, within their local church environment, to equip them to be Holy Spirit empowered members of God's household.*

Our passion is to prepare Christ-centred leaders for every church. In addition to our three foundational pillars (Bible-based, Christ-centred, Spirit-led), we hold these core convictions about the nature of theology:

1. Good theology is *God-glorifying*: The goal of all theology and all ministry is to bring glory to God.
2. Good theology is *mission-minded*: All good theology is inherently missional, being in service of the mission of God. We believe that theology divorced of its missional ethos is unfaithful to the call of God.
3. Good theology is *church-based*: Theology must always be anchored in the church and in service of the church.

We chose to carry out our mission through distance education because of a heartfelt belief in church-based training as the preferred approach. We believe in 'training for ministry in ministry'; we are committed to training God's servants in the context of their ministry.



## FOUNDATIONAL PILLARS

SATS stands on a triune doctrinal foundation:

- **The unique authority of the Word of God the Father.** We believe that the Bible is the only written revelation of and from God and that it is therefore all we need for faith and life.
- **The lordship and centrality of Jesus Christ.** We believe that Jesus Christ is God the Son and the full revelation of the Godhead to humanity. He is the head of the church and the Lord of our lives. As a result, we are to base our doctrine and practice on what he said and did.
- **The ministry of the Holy Spirit.** We believe that we are to trust and obey God the Holy Spirit and that we are to embrace all that the Scriptures reveal of him and his ministry.

These foundational principles are summed up in our by-line: **Bible-based, Christ-centred, Spirit-led.**





## STATEMENT OF FAITH

We define ourselves as a Bible-based, Christ-centred, Spirit-led seminary. We are a home to a broad cross-section of Christians who believe that the Bible is the inspired, infallible Word of the Triune God, that Jesus Christ is fully God and fully man, that through his death and resurrection Jesus Christ became the only Saviour, that people are saved by grace alone through faith alone in Jesus Christ alone, that the Holy Spirit is the third Person of the Trinity who actively ministers to and through God's people, that the Lord founded and loves the church, and that Jesus Christ is coming again to judge all people.

SATS is a home for Christians from a broad diversity of churches and denominations who are comfortable with our high view of the Bible and of the gospel. We make no attempt to take a firm stance on most issues that divide evangelical believers. You will feel at home regardless of your beliefs about baptism, the Lord's Supper, women in ministry, Calvinism versus Arminianism, the age of the Earth, the end times, or any number of other debates amongst evangelical Christians.

You do not need to agree with our faith commitments to study through SATS. We teach theology from an evangelical perspective, but anyone is welcome to study with us.

You can read our Statement of Faith on our website.  
<https://www.sats.edu.za/about-us/statement-faith/>



## PHILOSOPHY

We see our role as providing *lifelong learning*<sup>1</sup> opportunities in theological and practical, church-related studies of a high academic standard. We believe that the responsibility for the learning process should be placed upon the student within the context of the local church. We see our role as a provider of reasonably priced, academically sound, Bible-based, Christ-centred, Spirit-led online training.



## BOARD OF DIRECTORS

SATS is under the governing oversight of a Board of Directors that meets five times each year. At present, the members of the Board include Eleanor Chamberlain, Stuart Tapson, Adam Spence, Douglas Timberlake, Henning du Plessis and Kevin Smith. Under the leadership of the Board, the Seminary has successfully maintained its policy of being debt free since its inception.

1 — Lifelong Learning describes the philosophy that in this day and age we all need to be in a continuing process of updating our skills and knowledge.





# ACCREDITATION AND REGISTRATION

All our programmes are accredited by the Council on Higher Education (CHE), the Education and Training Quality Assurer (ETQA) of the South African Qualifications Authority (SAQA), and are registered by the Department of Higher Education and Training (DHET, registration number 2001/HE08/005). The registered programmes are:

- Doctor of Philosophy in Theology
- Master of Theology
- Master of Divinity (forthcoming)
- Bachelor of Theology Honours
- Bachelor of Theology
- Higher Certificate in Christian Life
- Higher Certificate in Christian Counselling

SATS is registered as a Section 21 company (reg. no. 2002/005184/08), a PBO (18/11/13/2403), and an NPO (033-343-NPO).

We are also a founder member of the National Association of Distance Education Organisations in South Africa (NADEOSA) and we are a member of the Association of Private Providers of Education, Training and Development (APPETD), the South African Institute for Distance Education (SAIDE), the International Council for Evangelical Theological Education (ICETE), the International Council for Higher Education (ICHE), the CHEA International Quality Group (CIQG) and the World Evangelical Theological Institute Association (WETIA).

Our accreditation and Department of Education registration provide assurance that the quality of our programmes is of the highest standard. Our programmes are therefore nationally and internationally comparable and the credits earned with us are truly “portable,” i.e. they can be transferred to other accredited, registered institutions. The increasing number of international students confirms the acceptability of our programmes around the world.

Recently our MTh and PhD programmes were submitted to two of the most frequently used and highly recommended evaluators in the USA, namely the International Education Research Foundation, Inc. ([www.ierf.org](http://www.ierf.org)) and the American Association of Collegiate Registrars and Admissions Officers’ International Education Services (<http://ies.aacrao.org>), and both confirmed that these degrees represent attainment of a level of education comparable to the equivalent degrees from a regionally accredited university in the United States. Our degrees are also recognised by the German website [www.anabin.kmk.org](http://www.anabin.kmk.org) which provides information about the evaluation of foreign qualifications, the Brazilian and Argentinian governments, while the IQAS (International Qualification Assessment Service) in Alberta, Canada, an independent, secular assessment service used by many Canadian universities to establish the quality of foreign qualifications, has evaluated the SATS BTh as the local equivalent of a “three year Bachelor’s degree with a focus in theology.”





## PARTNERING WITH SATS



**Mr Hugh Goosen**  
(Ambassador)

We believe in partnering with like-minded ministries, churches, institutions, and organisations, because we know that there is significant kingdom value in collaboration.

The two most common types of agreement are:

- **Articulation agreements:** If you offer a theological programme, we could have an articulation agreement that allows your graduates to further their studies at SATS.
- **Church agreements:** If your church or denomination needs to train its leaders, you could do this in collaboration with SATS. SATS provides the formal theological training, while the church provides additional support services, such as mentoring.

If a partner ministry wishes to train its leaders through SATS, we can formalise the agreement through a *Letter of Association*. Once the agreement is in place, all students linked to the associated ministry who register with SATS will receive a 10 per cent discount on the advertised tuition fees.

### **Please Note:**

1. SATS is not an accrediting agency. We cannot accredit your Bible school or ministry training programme.
2. SATS cannot offer joint programmes. The law in South African mandates that we take full and sole responsibility for all teaching-and-learning in our programmes.

To find out more about the opportunities that exist through a SATS partnership please contact [hugh@sats.edu.za](mailto:hugh@sats.edu.za)



## ADVANTAGES OF STUDYING AT SATS

When you enrol at SATS, you meet a team of committed believers who are passionate about serving Jesus by serving you. Our team is creative, innovative, dedicated, and enthusiastic about the way they teach and serve your study needs. When you enrol at SATS, you can expect to



- grow under the teaching of a seminary and a team of lecturers who believe the Bible and love the Lord (Luke 6:40);
- receive a fully-accredited qualification that is respected worldwide;
- love the convenience of instant online access to everything you need for your studies;
- experience a challenging programme that maintains high academic standards;
- enjoy fast, friendly service from academic and administrative staff;
- join a seminary that responds to the needs and inputs of its students;
- interact with peers from all around the world who love Jesus, making new friends in the process;
- learn from a diverse team of highly-qualified academics who love Jesus and the truth;
- grow with a ministry that is innovative in its use of technology;
- benefit from a programme that is simultaneously thoroughly biblical and deeply practical;
- engage with lecturers who are actively engaged in theological research; and
- rest in the knowledge that our staff prays daily for our students.

**Andrew White testimonial:** *“SATS has been an incredible tool that God has used to not only empower me to better understand His word in order to teach and minister, but also as a tool for me to fall deeper in love with Him.”*

**Gerald Munemo:** *“My journey with Sats has been a spiritually enriching experience, I am being equipped with tools that help me minister effectively to extend God’s kingdom, and make much of Jesus Christ. I recommend SATS to ministers and even layman that seek to develop themselves spiritually and know more about God.”*



# MySats

MySats is a high-quality, powerfully-resourced online learning platform or 'virtual classroom' in which you will study. It is the central hub of the Seminary, the platform that makes online learning possible, wherever you live in the world.



When you enroll at SATS, you receive your account credentials for MySats, which provide access to the learning environment where you will find your courses, readers, textbooks, lecturers, classmates, assessment tasks and so on. From my Sats, you can:

- See your curriculum
- Order and pay for your courses
- Access the Helpdesk
- Read or borrow almost 200,000 e-books (e-library)
- Download hundreds of thousands of journal articles (e-library)
- Download your study materials for your courses
- Submit your assignments and access your feedback
- View recorded lectures in video
- Participate in class discussions (forums)
- See the due dates for all your forthcoming activities
- Interact with the lecturer and other students
- Attend live lectures, including webinars
- Complete interactive lessons
- Write your examinations
- view your financial transactions

Our lecturers task is to:

- Facilitate learning
- Ensure that learning takes place
- Foster research and communication skills
- Help integrate learning, worship and service



# OPERATIONAL TEAMS

## Senior Management



**Principal**  
Dr Kevin Smith  
DLitt, PhD



**Head of Academics**  
Dr Johannes Malherbe  
DTh



**General Manager**  
Mr Doug Timberlake  
MBA, BTh Hons

## Administration and Support Team



**Head of Programme Delivery**  
Dr Willem Semmelink  
DTh



**Enrolments Officer**  
Miss Sharon Eagle



**Executive Secretary**  
Mrs Lonel Fisher



**Student Liaison Officer**  
Mrs Erika Kelbrick  
BSoc Psi, BAHons



**Accountant**  
Mr Victor Kunda  
BCom Informatics, BCompt



**Registrar**  
Mrs Jane Meyer  
BA



**Assistant Librarian**  
Mr Jabu Mnguni



**Registrar**  
Mrs Marilyn Schott  
MThc



**Receptionist**  
Mrs Lindiwe Sibisi



**Head of Administration**  
Mrs Grace Sikhosana



**MySats Support**  
Mrs Ann Steyn



**Partnership Administrator**  
Miss Elsie Zondo





# OPERATIONAL TEAMS

## Programmers/Staff/Technology and Development



**Head of Technology**  
Dr Timothy Churchill  
BSc, MTh, PhD



**IT Manager**  
Mr Louis Krasso  
Dip Eng



**MySats Manager**  
Mr Mathieu Pelletier  
MA



**Developer**  
Mr Timothy Solomon  
BIS: Multi-Media

## Marketing



**General Manager**  
Mr Doug Timberlake  
MBA, BTh Hons



**Content Manager**  
Mr Rudolph Boshoff  
BTh Hons, MThc



**Ambassador**  
Mr Hugh Goosen  
MTh, PhDc.



**Media Manager**  
Mr Marno Kirstein  
MA

# ACADEMIC TEAMS

## Programme Coordinators



**Dr Willem Semmelink**  
DTh  
Programme Coordinator for HCCL & Bth  
[willem@sats.edu.za](mailto:willem@sats.edu.za)



**Prof. Mervin van der Spuy**  
DTh  
Programme Coordinator for HCCC  
[mervin@sats.edu.za](mailto:mervin@sats.edu.za)



**Dr Jesse Kipimo**  
DTh  
Programme Coordinator for BTh Honours  
[jesse@sats.edu.za](mailto:jesse@sats.edu.za)



**Dr Robert Falconer**  
PhD  
Programme Coordinator for MTh & PhD  
[robert@sats.edu.za](mailto:robert@sats.edu.za)



**Dr Modisa Mzondi**  
DLitt et Phil (x2)  
Programme Coordinator for MDiv  
[modisa@sats.edu.za](mailto:modisa@sats.edu.za)





# ACADEMIC TEAMS

## Curriculum Development and Instructional Design Team



**Dr Pieter Labuschagne**  
PhD



**Jose de Carvalho**  
MTh



**Ruan Huysen**  
MThc



**Michelle Kleynhans**  
MThc



**Dr Kevin Smith**  
DLitt, PhD



**Suzanne van der Merwe**  
MThc

---

## Teaching Team

These are the course lecturers (facilitators) who teach courses for SATS. All the listed qualifications are from accredited institutions.



**Dr Johannes Malherbe**  
DTh  
Head of Academics  
[johannes@sats.edu.za](mailto:johannes@sats.edu.za)



**Dr Seyram Amenyedzi**  
PhD



**Bert Barnes**  
MTh Cand.



**Dr Robert Brodie**  
PhD



**Izaak Connoway**  
MTh



**Dr George Coon**  
PhD



**Estelle Crafford**  
BTh



**Jose de Carvalho**  
MTh



**Dr Robert Falconer**  
PhD





# ACADEMIC TEAMS

## Teaching Team (continued)



**Gurson Fortuin**  
MThc



**Jill Gorven**  
BTh Hons



**Wilna Grey**  
BTh Hons



**Dr Abraham Byeong Jun**  
PhD



**Felix Kantondo**  
MTh



**Dr Jesse Kipimo**  
PhD



**Dr Pieter Labuschagne**  
PhD



**Pelham Lessing**  
MPhil



**Prof. Daniel Lioy**  
PhD



**Tawanda Maenzanise**  
MSocSci



**Patrick Mutombo**  
BTh



**Dr Modisa Mzondi**  
DLitt et Phil (x2)



**Louie Naidoo**  
BTh Hons



**Dr Gabriel Ndhlovu**  
PhD



**Mathieu Pelletier**  
MA



**Sue Pneumaticos**  
BTh Hons



**Dr Mark Pretorius**  
PhD



**Yvonne Roberg**  
MThc



**Selma Rudd**  
BA, HCCC



**Marian Smith**  
BTh Hons



**Adrian Tamblyn-Watts**  
MTh



**Jonothan Tudhope**  
BTh Hons



**Prof. Mervin van der Spuy**  
DTh



**Dr Cornelia van Deventer**  
PhD





# ACADEMIC TEAMS

## Teaching Team (continued)



**Beverley van Rensburg**  
MTh



**Dr Bert Watson**  
PhD



**Akeem Waqar**  
BTh Hons



**David Woods**  
MTh

## Supervising Team



**Dr Sylvain Allaboe**  
PhD (SATS) Systematic Theology



**Dr Seyram Amenyedzi**  
PhD, Missiology, SU



**Dr Annang Asumang**  
PhD, New Testament, SATS



**Dr Vincent Atterbury**  
DTh, Practical Theology, UNISA



**Dr Antonio Barro**  
PhD, Missiology,  
Fuller Theological Seminary



**Dr Robert Brodie**  
PhD, Practical Theology,  
St Augustine's



**Dr Timothy Churchill**  
BSc, MTh, PhD



**Dr George Coon**  
PhD, Systematic Theology,  
University of Toronto



**Dr Bill Domeris**  
PhD, New Testament,  
University of Durham



**Dr Robert Falconer**  
PhD, Systematic Theology, SATS



**Dr Godfrey Harold**  
PhD, Systematic Theology, UWC



**Dr Nicolene Joubert**  
PhD, Psychology, NWU



**Dr Shaun Joynt**  
PhD, Practical Theology, UP



**Dr Abraham Byeong Jun**  
PhD, Missiology, NWU



**Dr Jesse Kipimo**  
DTh, Missiology, UNISA



**Dr John Koning**  
PhD, Missiology, NWU







# ACADEMIC TEAMS

## Supervising Team (continued)



**Dr Vernoni Kruger**  
DLitt, Biblical Greek, SU



**Dr Pieter Labuschagne**  
PhD, Old Testament, UP



**Vernon Light**  
PhDc, UFH



**Prof Dan Lioy**  
PhD, New Testament, NWW



**Batanayi Manyika**  
MPhil, University of Stellenbosch  
PhDc, New Testament, SATS



**Dr Leonard Mare**  
DLitt et Phil,  
Biblical Studies, UJ (RAU)



**Dr Johannes Malherbe**  
DTh, Old Testament, SU



**Dr Modisa Mzondi**  
DLitt et Phil, Biblical Studies, UJ  
DLitt et Phil, Theology, UJ



**Dr Victor Nakah**  
DTh, Practical Theology, SU



**Dr Gabriel Ndhlovu**  
PhD, Christian Ethics, SATS



**Dr David Ngarulya**  
PhD, Mission, TED



**Dr Peter Penner**  
DTh, Missiology, UNISA;  
DHabil, Missiology, Karoli  
Gaspar University



**Dr Christopher Peppler**  
DTh, Practical Theology, UZ



**Dr Mark Pretorius**  
PhD, Systematic Theology, UP



**Dr David Roldan**  
PhD, Systematic Theology, SATS



**Dr Alberto Roldan**  
PhD, Theology, Instituto  
Universitario ISEDET



**Dr Norberto Saracca**  
PhD, Theology, University of  
Birmingham



**Dr Willem Semmelink**  
DTh, Practical Theology, UNISA



**Dr Kevin Smith**  
DLitt, Biblical Greek, SU  
PhD, Old Testament, SATS



**Dr Roger Tucker**  
PhD, Practical Theology, UP



**Dr Cornelia van Deventer**  
PhD, New Testament, SU



**Dr Chuck Van Engen**  
PhD, Missiology,  
Free University of Amsterdam



**Dr Ernst Wendland**  
PhD (UW, USA) Language





## STUDENT SUPPORT

We understand that it is not easy to study in isolation. The good news is that we have created a student support culture which serves the needs of our students. These are some of the services we provide to 'take the distance out of distance education'. You can reach any of these people by phone if you call +27 11 234-4440 and ask for them.

### General Help

For any general support requests that do not pertain to the specific categories below, please contact Grace Sikhosana at the following email address: [helpdesk@sats.edu.za](mailto:helpdesk@sats.edu.za). Grace is thoroughly familiar with most of SATS' operations and is eager to help.



### Enrolment

Before you enrol you are welcome to contact our efficient Enrolments' Officer, Sharon Eagle, who will assist you with any questions you may have about our courses, RPL, fees, etc. She will also be the first person to see your application form when you enrol. Call her on 011 234-4440 or email her at [enrolment@sats.edu.za](mailto:enrolment@sats.edu.za).



### MySats

If you need help with the MySats e-learning platform, Ann Steyn is available to assist you. Contact her at [anns@sats.edu.za](mailto:anns@sats.edu.za).



### Library

If you need help accessing or using the electronic library holdings, our Librarian, Tawanda Maenzenise [library@sats.edu.za](mailto:library@sats.edu.za), is available to help you.



### Bursaries

We offer a limited number of partial bursaries for those who simply cannot afford to study. A special bursary fund exists for students from the Eastern Cape. To apply, please email [bursaries@sats.edu.za](mailto:bursaries@sats.edu.za). Depending on the availability of funds, applications will be considered three times per annum, namely, in June, September, and December.





## STUDENT SUPPORT

### Student Liaison

Our research shows that students who have mentor support in place generally work through their studies faster and attest to a more meaningful and successful learning experience. The SATS staff can regularly contact students, motivating and encouraging them to persevere with their studies, but it is the local, personal friend or pastor who will fulfil the role of personal support. Erika Kelbrick coordinates the mentoring programme [erika@sats.edu.za](mailto:erika@sats.edu.za).



### Partner Support

If you are a student at a partner ministry and you need help with administrative processes, please contact Elsie [elsie@sats.edu.za](mailto:elsie@sats.edu.za).



## LIBRARY

Our electronic library provides our staff and students with online access to approximately 180,000 e-resources and 16,000 academic journals. You have unlimited access to those holdings. You can loan e-books just as you would loan books from a physical library; the only difference is that you read on a computer, a tablet, or a smartphone. You can save the chapters you want to keep for future reference—the publishers of most e-books have the limit set to either 60 or 100 pages that can be downloaded. Our e-journal holdings provide you with full-text access to thousands of journals and hundreds of thousands of scholarly articles.



You can access all these holdings from the comfort of your own home. All you need to use them is an Internet connection and an electronic device on which to read them (e.g. laptop, tablet, or smartphone).

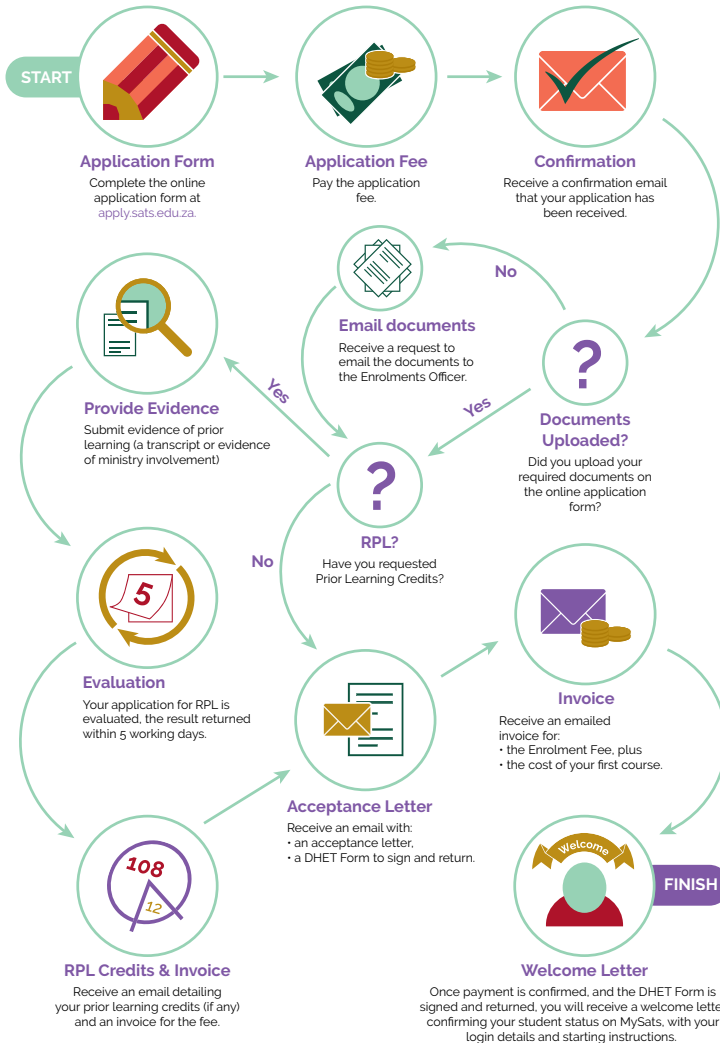


# ENROLMENT PROCEDURE

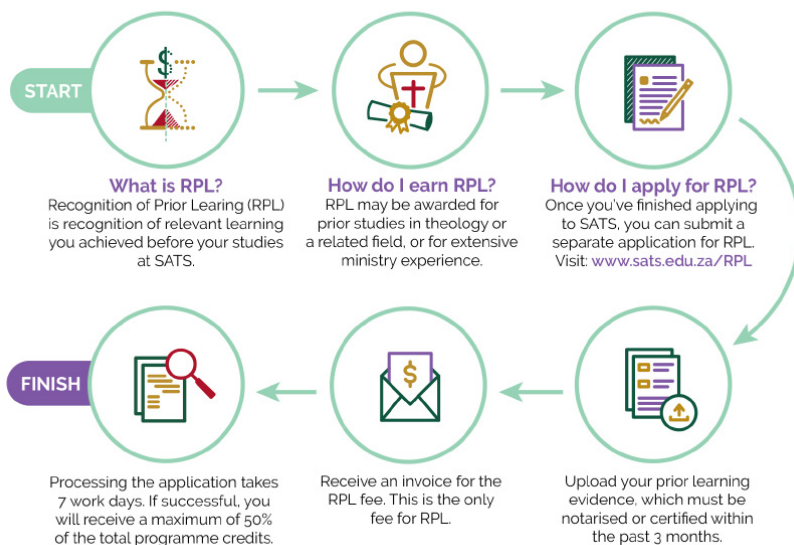
Our website has an easy Apply Online facility to help you complete an application form and upload and submit your documents.

Once you have successfully submitted the online application form, where you can also upload your supporting documents, you will receive an automatic email confirming receipt of delivery to the Enrolments Officer, who will then process your application. You will receive information regarding your application within 5 working days of your application.

## How to Enrol as a Student at SATS



## How do I receive recognition for prior learning at SATS?



## FREQUENTLY ASKED QUESTIONS

### **What are credits? How are credits calculated?**

One credit equates to approximately 10 hours of time on task. At the undergraduate level, all courses are 12 credits, requiring approximately 120 hours of work; this includes research, writing of the assignment(s), and the examination. Since the courses at SATS run over 11—12 weeks, an average student should study 10—11 hours per week in each course. If you are familiar with the American system of counting credits, 1 US credit is equally to approximately 4 South African credits.

### **Do I need to buy textbooks?**

*You can do an entire degree at SATS without needing to purchase a single textbook!* For most courses, we provide you with electronic textbooks and readers; you do not need to purchase textbooks. If you choose to enrol for the Higher Certificate in Christian Counselling or the BTh with an emphasis on Christian Counselling, you need to purchase five books that you can use throughout the programme. If you choose to Greek or Hebrew, you need to purchase the prescribed textbooks. A few BTh Honours courses require you to purchase a textbook, but most do not.



## FREQUENTLY ASKED QUESTIONS

### **Can I take courses for non-degree purposes?**

Yes! If you wish to take selected courses for self-enrichment without committing to doing a qualification, you are welcome to enrol for them. When you finish, you can request a transcript reflecting the courses passed for non-degree purposes.

Similarly, if you are registered for a programme and wish to take extra courses, in addition to the ones required for your degree, you are welcome to do so. For instance, you might be an MTh student who wishes to take Biblical Hebrew for extra credit. In such cases, the extra courses reflect on your academic record even though they are not required for your degree.

### **When can I enrol?**

You can enrol at SATS at any time of the year. You will commence your studies in the next available term.

### **In what languages does SATS teach?**

The official language of the Seminary is English. All courses are taught in English and all the instructional documentation of the Seminary is written in English. However, students who are not first-language English speakers are graded in a fair and equitable manner.

MTh and PhD students may be permitted to write their theses and dissertations in French, Spanish, Portuguese, German, or Russian, if their supervisor is proficient in the preferred language. These students must, however, be able to read English proficiently.

### **Does SATS make special provisions for students with disabilities?**

SATS tries to accommodate students with disabilities or special needs as much as is practical. Since we teach online, students need not travel to the campus; this averts disabilities that make travel difficult. To date, we have graduated one legally blind student and we have a quadriplegic moving towards graduation. When medical needs necessitate, we grant students with disabilities extra time and we may allow them to submit oral assignments and examination answers instead of typed ones. Visually impaired students use 'text-to-speech' and 'speech-to-text' technologies.

### **Will my denomination recognise my degree from SATS?**

There are a number of denominations currently enrolling students at SATS for their theological studies. You will need to contact the head of your denomination in order to find out if the SATS degree meets their denominational requirements. SATS does not ordain ministers.





## FREQUENTLY ASKED QUESTIONS

### **Will my degree from SATS be recognised overseas?**

South African degrees are well respected overseas and, since SATS has the highest level of accreditation in South Africa, most foreign institutions will admit our graduates to further studies (see Accreditation and Registration). However, each institution is sovereign with respect to which applicants it admits, so no institution local or international is obliged to admit a SATS graduate (or, for that matter, a graduate from any other institution).

### **Does SATS offers bursaries?**

Yes, we have a small bursary fund for those who cannot afford to study. To apply, please email [bursaries@sats.edu.za](mailto:bursaries@sats.edu.za). Funds permitting, applications are considered three times per year.

### **Does SATS have a code of conduct?**

Yes. We expect all our students to conduct their academic affairs associated with the Seminary in a way that befits Christ's disciples. Plagiarism, for example, is unacceptable, as is copying another student's work or making any defamatory remarks about the Seminary, its staff, or fellow students. The full code of conduct is available on our website and in the Student Handbook.

### **How can I log a complaint or a grievance?**

Should you have reason to query the way in which the assessment of your assignments or examinations has been conducted, or if you wish to lay a complaint against a staff member, or if you have a grievance about any other matter related to your studies, you should follow the procedures laid out in the Student Handbook.

### **Do SATS' facilities comply with health-and-wellness regulations?**

Yes, we have a detailed policy with accompanying procedures to ensure that our campus is safe and secure. Since students do not work on campus, this mostly affects staff. The full policy is available on our website and in the Student Handbook.

### **Do I need to sign a registration contract with SATS?**

The Application Form functions as our registration contract. When you sign the Application Form, you agree to abide by the policies of the Seminary. The Department of Higher Education and Training requires you to sign its 'Confirmation of Programme' form when you register.



## GRADUATION



The high point of a student's many years of study is the graduation ceremony, and even though the South African Theological Seminary is a distance learning institution, we still host an annual graduation ceremony. Each year we carefully select a speaker to speak on a topic that will inspire our graduands to effectively implement their learning in some form, either through ongoing or first time ministry.

We encourage family members to join our graduands for the ceremony, as this is a day of great celebration; they have spent many years sacrificing their time in completing their studies and this is the occasion to recognise their achievement.

We also encourage our students to continue their relationship with SATS after they have graduated, either as assessors, mentors or volunteers working with the staff of the Seminary. We invite all our graduates to join the SATS Alumni Association which facilitates this on-going relationship. Contact: [graduation@sats.edu.za](mailto:graduation@sats.edu.za).

As students complete their programmes they are graduated throughout the year. You will be informed by the Registrar that you have completed your programme and invited to attend the annual graduation ceremony. The 2020 graduation will be held at Rosebank Union Church, Sandton at 2pm on the 12th September 2020. All enquiries relating to the graduation are to be directed to: [graduation@sats.edu.za](mailto:graduation@sats.edu.za).

The graduation ceremony will be streamed live via Youtube.







## PROGRAMME INFORMATION

SATS offers biblically based, academically rigorous, and practically relevant programmes. Like Hugh of St. Vincent, we believe education is the pursuit of wisdom and virtue, both of which are ultimately found in Christ through friendship with God. We design our programmes and our courses with the dual ambition of being both informative and transformative. We strive to engage the text and the context, the Word and the world in ways that are God-glorifying and missional.

SATS is known for providing rich online learning experiences. Our MySats platform affords our students a world-class portal for e-learning, connecting you to your study materials, fellow students, course facilitator, library holdings, and assessment tasks. We aim to take the distance out of distance education by automating processes that can and should be instant, freeing our staff to offer fast and friendly service where the personal touch is needed.

We serve people who are committed to the Lord Jesus Christ, who love and respect the Word of God, and dedicate their lives to advancing the kingdom of God through practical ministry. Like Pierre de la Ramée, we believe that theology is ‘the doctrine of living well for God’.

Since all our teaching-and-learning takes place online, you will need regular, personal access to the Internet. SATS courses can be completed on a smartphone or a tablet, but a personal computer is desirable for writing longer essays.

## NEW PROGRAMMES FOR 2020

### **Bachelor of Theology (counselling focus)**

SATS is excited to offer a new concentration in our BTh, namely, Christian counselling. The BTh with a focus in Christian counselling is 60 per cent theology and 40 per cent counselling psychology, providing advanced training for Christian and pastoral counsellors that integrates theology and psychology from a Bible-based, Christ-centred, Spirit-led perspective. If you complete this programme, you will not only be well-equipped to help hurting people, but you will also be able to register with as an Intermediate Religious Professional in Christian Pastoral Counselling with the Council for Pastoral and Spiritual Counsellors.

If you choose to do the BTh with a counselling focus, you will have a fixed curriculum. You will complete the 18 compulsory BTh courses; your 12 elective courses will all be counselling subjects. Due to the higher level of lecturer engagement required to teach counselling courses, the price for the counselling electives is slightly higher than the cost of the other BTh courses. You will need to purchase five textbooks, which you will use during all the counselling courses.



# NEW PROGRAMMES FOR 2020

## Master of Divinity (forthcoming)

We have received accreditation for a Master of Divinity programme. This is a two-year professional master's degree designed for pastors. Since it does not require a prior degree in theology, it is the ideal gateway into advanced theological and ministerial training for second-career pastors.

As with all SATS offerings, the MDiv is 100 per cent online, affording busy pastors and leaders the opportunity to receive high-level training within their ministry context.

We are waiting for the authorities to finalise a few administrative processes, after which we can launch the programme. We hope to launch in May 2020. If the DHET does not furnish our Certificate of Registration in time, the launch will only take place in August 2020.

The SATS MDiv will be a 240-credit degree, consisting of 180 credits of coursework and a 60-credit capstone project.

For more information, please contact [admin@sats.edu.za](mailto:admin@sats.edu.za)



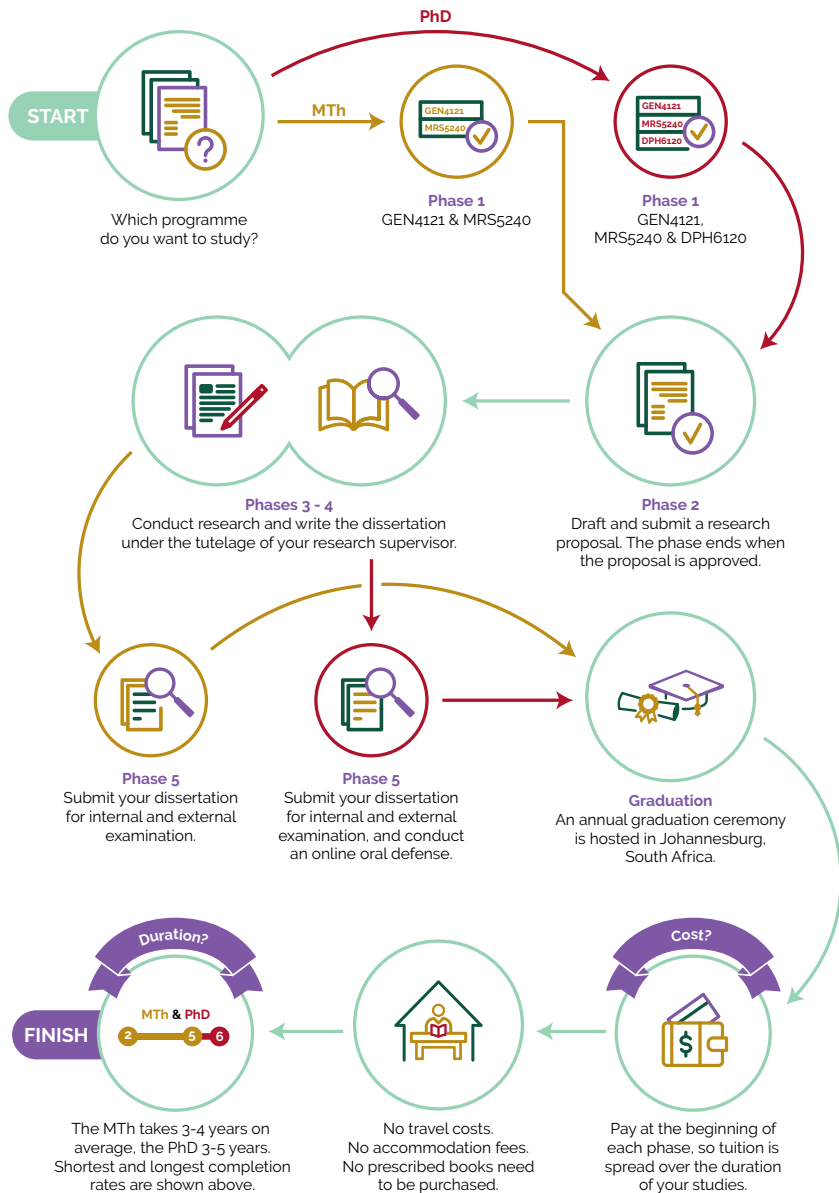
## PRICING

You may buy one course per term or more than one course per term. If you buy two or more courses at any time on the same invoice, you will receive a 10% discount per course. Consult the SATS website cost calculator to estimate the duration of your studies based on the number of courses you complete each year. ([www.sats.edu.za](http://www.sats.edu.za)) We encourage you to complete at least one course per term per 12 month period. When you study the prices, please bear the following in mind:

- 1. Total cost.** Our prices constitute the total cost of the programme. There are no hidden costs for textbooks, and there are no travel or accommodation costs, as all our courses are taught online. For most tertiary programmes, the costs of travel, accommodation, and textbooks far surpass the cost of tuition.
- 2. Pay per course.** You only need to pay for the courses or phases that you are taking, which means that the total cost of your studies is spread over the duration of your study programme.
- 3. No refunds.** If for some reason you elect to cancel your enrolment in a course or withdraw from your study programme, no refunds will be given.

<b>COURSEWORK PROGRAMMES</b>	South Africa	Developing Countries	Developed Countries
Application Fee	R376	\$34	\$61
Enrolment	R1 696	\$137	\$234
<b>BTh Courses</b>			
Theology Courses 12 Credits	R2 145	\$181	\$323
Counselling Courses 12 Credits	R2 452	\$207	\$343
<b>BTH Honours Courses</b>			
12 Credit Courses	R2 528	\$218	\$407
24 Credit Courses	R5 056	\$436	\$815
<b>Certificate Courses</b>			
HCCC	R2 452	\$207	\$343
HCCL	R2 145	\$181	\$323
<b>POSTGRADUATE PROGRAMMES</b>			
<b>MTh</b>			
Fee per Phase	R7 005	\$573	\$1 169
<b>PhD</b>			
Fee per Phase	R18 216	\$1 545	\$3 096
<b>OTHER SERVICES</b>			
RPL	R1 950	\$160	\$290
Re Assessment	R416	\$32	\$50
Re-assessment Fee: If you are not satisfied with the mark awarded by one of your assessors, you are welcome to request a reassessment	R420	\$32	\$50
Change to Curriculum	R120	\$11	\$18
Special Letters	R107	\$9	\$18
Transcripts	R160	\$13	\$42
Moderation fee			
Reactivation Fee	R390	\$30	\$50

## How do our Research Programmes work?





## DOCTOR OF PHILOSOPHY IN THEOLOGY

### 360 CREDITS ON NQF LEVEL 10

Our PhD is designed to raise up scholar-leaders in various fields of Christian ministry. It is a fully-accredited online programme that provides the opportunity for ground-breaking theological research.

#### **Do I qualify?**

To be admitted to the PhD, you must have achieved excellent results in a relevant and accredited master's degree, such as an MTh. If you are unsure, you can apply online.

#### **How does it work?**

The PhD is a research degree that culminates in an original dissertation of 80,000-100,000 words. The learning journey is divided into five phases.

**Phase 1** begins when you enrol. It consists of two online courses: GEN4121 Theological Orientation and MRS5240 Research Concept Development.

**Phase 2** requires you to draft and submit a formal research proposal, which you do in consultation with your appointed supervisor, a scholar specialising in your research area. The phase ends when SATS' Research Committee approves your research proposal.

**Phases 3-4** are where you conduct the research and write the dissertation, under the tutelage of your appointed supervisor.

**Phase 5** is about examination! You submit your dissertation for internal and external examination, making the required improvements. You must also submit an article based on the thesis. The PhD journey culminates in the online oral defence. This takes place after the dissertation passes both the internal and external evaluation process. The student is required to defend his or her thesis by responding to questions posed by a team of experts in the chosen fields of study.

#### **How long does it take?**

The minimum duration is two years, but the average completion time is 3-5 years. You have a maximum of six years to finish.

#### **How much does it cost?**

Please consult the website for pricing applicable to your region of the world, but please bear the following in mind when assessing the financial implications:

1. You pay at the beginning of each phase, so the tuition is spread over 3-5 years (the average time it takes to finish).
2. The tuition fees are the total cost of the programme. There are no hidden costs, no travel costs, no accommodation costs, and no prescribed books to purchase. For many PhD programmes, these 'hidden' costs can easily double or triple the total cost.

Kindly note that all fees paid to SATS are non-refundable and that prices are increased annually.





## MASTER OF THEOLOGY

### 180 CREDITS ON NQF LEVEL 9

Our MTh is a research-based degree that is fully accredited and completely online. The degree takes the form of a substantial research project on a topic that is relevant to your life or ministry. You conduct the research under the guidance of a specialist supervisor.

#### **Do I qualify?**

To be admitted to the MTh, you must have a relevant, accredited four-year Bachelor's degree or a Bachelor Honours degree. If you are unsure whether you qualify, you can apply online.

#### **How does it work?**

The MTh is a research degree that culminates in an original thesis of 40,000—50,000 words. The process is divided into five phases.

**Phase 1** begins when you enrol. It consists of a two online courses: GEN4121 Theological Orientation and MRS5240 Research Concept Development.

**Phase 2** requires you to draft and submit a formal research proposal, which you do in consultation with your appointed supervisor, a scholar specialising in the field of the research. The phase ends when SATS' Research Committee approves your research proposal.

**Phases 3–4** are where you conduct the research and write the thesis, under the tutelage of your appointed supervisor.

**Phase 5** is about examination! You submit your dissertation for internal and external examination, making the required improvements. You must also submit an article based on the thesis.

#### **How long does it take?**

The minimum duration is two years, but the average completion time is 3—4 years. You have a maximum of five years to finish.

#### **How much does it cost?**

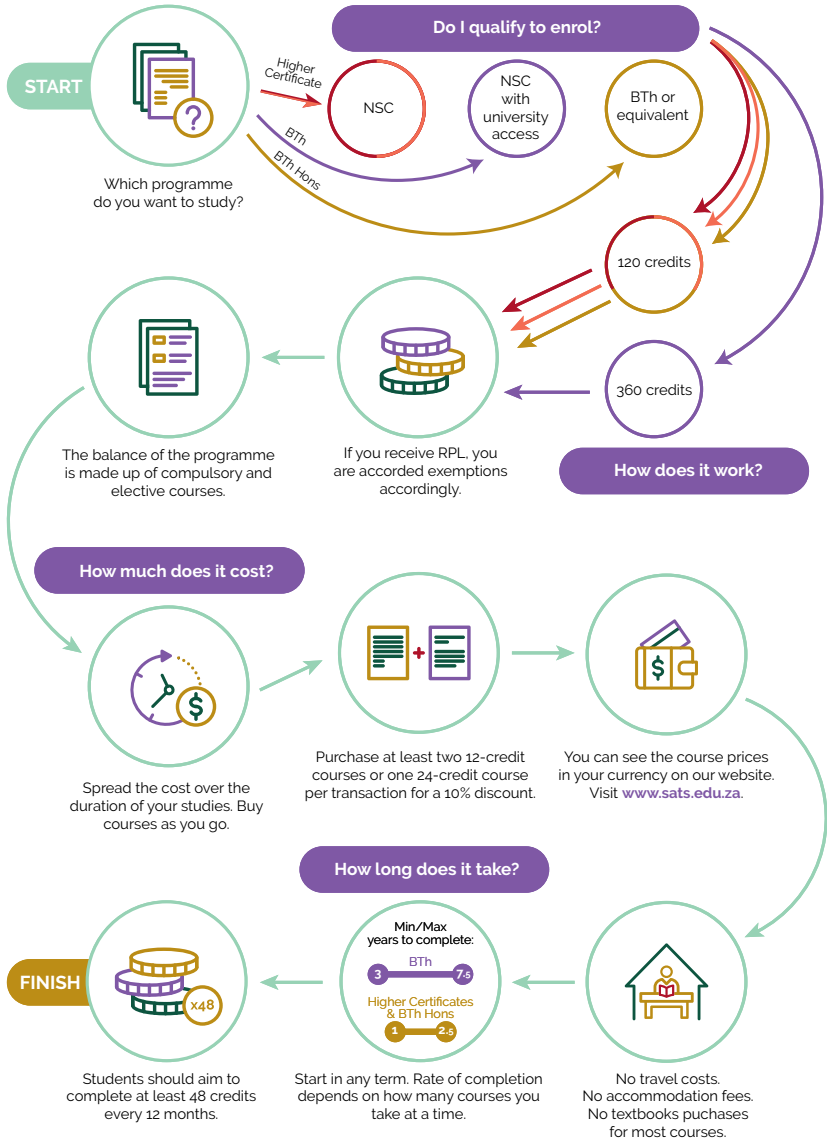
Please consult the website <https://www.sats.edu.za> for pricing applicable to your region of the world, but please bear the following in mind when assessing the financial implications:

1. You pay at the beginning of each phase, so the tuition is spread over 3—4 years (the average completion time).
2. The tuition fees are the total cost of the programme. There are no hidden costs, no travel costs, no accommodation costs, and no prescribed books to purchase. For many MTh programmes, these 'hidden' costs can easily double or triple the total cost.

Kindly note that all fees paid to SATS are non-refundable and that prices are increased annually.



# How do SATS Coursework Programmes work?





## BACHELOR OF THEOLOGY (HONOURS) 120 CREDITS ON NQF LEVEL 8

The BTh Honours is a one-year postgraduate degree that builds on a three-year degree. You would be likely to choose the BTh Honours for one of two reasons. Firstly, it serves as a bridge between Bachelor's level coursework and Master's level research. Secondly, it provides a potential access point into theological studies for students who have degrees in other disciplines.

### **Do I qualify?**

There are two ways to gain access to the BTh Honours.

1. You have a three-year BTh or equivalent degree.
2. You have a Bachelor's degree in another field accompanied by at least at least 120 credits of theological studies (e.g. an accredited Certificate or Diploma in Theology).

If you have a non-theological Bachelor's degree, you can do the required bridging coursework with SATS to gain access to the BTh Hons. If you are unsure, you can apply online.

### **How does it work?**

The Honours curriculum consists of one 24 credit course; the rest are 12 credits. The 24 credit course runs over 6 months, while the 12 credit courses take 3 months. There are three compulsory courses. You must accumulate 120 credits to complete the BTh Hons.

Unless otherwise indicated, the pass mark for all assessment tasks is 50 per cent. A distinction is 75 per cent. To pass a course, you must complete all the required assessment tasks, maintain a grade average of 50 per cent or above, and score at least 40 per cent for the examination.

### **Compulsory Courses**

GEN4121	Theological Orientation
RES4122	Research Methodology
RES4241	Research Project

### **12-Credit Electives**

- BIB4123 Ephesians
- BIB4124 Old Testament Studies
- BIB4129 New Testament Studies
- GEN4122 Directed Theological Reading
- MIS4121 Mission as Engagement
- MIS4122 Understanding Islam (*Prerequisite for MIS4123*)
- MIS4123 Critiquing Islam (*Prerequisite is MIS4122 or MIS3125*)







- NTS5121 Pastoral Epistles and Pastoral Ministry
- PRA4121 Practical Theology
- PRA4122 Narrative Preaching
- THE4122 Science and Theology
- THE4123 Child Theology
- THE4124 Systematic Theology

### **How long does it take?**

A full-time student would expect to finish the BTh honours in one year but the average time for part-time students to complete the Honours programme is 2½ years. You have a maximum of three years to finish.

**Please note:** You are required to complete 48 credits every twelve months, commencing with the date of enrolment.

### **How much does it cost?**

Please consult the website for pricing applicable to your region of the world, but please bear the following in mind when assessing the financial implications:

1. You only pay for courses when you are ready to take them. Therefore, your costs are spread over the duration of your programme.
2. The tuition fees are the total cost of the programme. There are no hidden costs, no travel costs, and no accommodation costs. Most courses do not prescribe required textbooks.

Kindly note that all fees paid to SATS are non-refundable and that prices are increased annually.





## BACHELOR OF THEOLOGY

360 CREDITS ON NQF LEVEL 7 (30 SUBJECTS OF 12 CREDITS EACH)

The BTh is the ideal preparation for those called to pastoral ministry or other forms of vocational Christian service. Our BTh contains a strong, balanced focus on Bible, theology, and ministry.

### Do I qualify?

To register for the BTh, you need to have a school-leaving certificate that grants university access. In South Africa, this is a National Senior Certificate (NSC) with four subjects at a rating of 4 (50-59 per cent) or higher. If you have an accredited tertiary qualification, we accept that in lieu of a school-leaving certificate. (If you do not qualify for direct admission to the BTh, you can start with the Higher Certificate in Christian Life.)

### How does it work?

The BTh requires you to earn 360 credits, spread across NQF levels 5—7, where first-year courses are on level 5 and third-year courses on level 7. Since all the courses are 12 credits, you must complete 30 courses to earn your degree. You must earn 120 credits at the exit level; that is, you must do 10 third-year courses.

The courses are divided into **compulsory** and **elective** categories. You must do all the compulsory courses and make up the remainder of your curriculum by choosing electives.

Unless otherwise indicated, the pass mark for all assessment tasks is 50 per cent. A distinction is 80 per cent. To pass a course, you must complete all the required assessment tasks, maintain a grade average of 50 per cent or above, and score at least 40 per cent for the examination.

If you have completed prior theological studies, you may apply for exemption from courses that you have covered previously. *If this applies to you, you need to apply for exemption and provide evidence to support the exemptions. To apply for exemptions, please contact [sharon@sats.edu.za](mailto:sharon@sats.edu.za).*





## What are the courses?

### BTh First Year

Please note, the first-year curriculum consists of 10 courses, of which 6 courses are compulsory.

#### These courses are compulsory

- BIB1121 How to Study the Bible
- BIB1123 The Words and Works of Jesus
- PRA1122 Introduction to Youth and Children's Ministry
- THE1120 Introduction to Theology
- THE1121 Christian Foundations
- THE1122 Biblical Worldview

#### Choose any four courses from the following electives:

If you select the Greek Courses you need to complete both at level 1 and both at level 2

- BIB1122 1 Corinthians
- BIB1124 Old Testament Survey
- BIB1125 Deuteronomy
- CYM1126 Connecting with Children (*Prerequisite for CYM2127*)
- PRA1121 Christian Relationships
- PRA1124 Biblical Leadership
- THE1123 The Holy Spirit: What the Bible teaches.
- THE1124 Survey of Church History
- BGK1121 Biblical Greek 1A (*Two Textbooks Required*)
- BGK1122 Biblical Greek 1B (*Prerequisite BGK1121*)
- BHB1121 Biblical Hebrew 1A (*Textbook Required*)
- BHB1122 Biblical Hebrew 1B (*Prerequisite BHB1121*)

**NB.** To reap the full benefits of the Biblical Language courses, you will need to take all 4 Greek or Hebrew courses.

**Minimum study requirements:** You are required to complete 48 credits of study every 12 months (commencing with date of enrolment).





## **BTh Second Year**

### **These courses are compulsory:**

- BIB2121 Hermeneutics (*Prerequisite for PRA2123*)
- BIB2123 Historical Books
- BIB2125 Paul's Letters
- MIS2124 Mission of God
- THE2122 The Doctrine of Man and Sin (*Prerequisite for THE2123*)
- THE2123 The Doctrine of Salvation (*Prerequisite is THE2122*)

### **Select any four from these:**

- BIB2122 The Pentateuch
- BIB2124 Book of Acts
- BIB2126 Psalms
- CYM2127 Walking with Wounded Children (*Prerequisite is CYM1126*)
- MIS2122 Contemporary Issues in Missions
- MIS2123 The Historical Perspective on Missions
- PRA2121 Christian Counselling 1 (*Prerequisite for PRA3124*)
- PRA2122 Pastoral Ministry
- PRA2123 Homiletics (*Prerequisite is BIB2121*)
- PRA2124 Children at Risk
- THE2121 The Doctrine of the Church
- THE2124 The Doctrine of God.
- BGK2121 Biblical Greek 2A (*Prerequisite BGK1122*)
- BGK2122 Biblical Greek 2B (*Prerequisite BGK2121*)
- BHB2121 Biblical Hebrew 2A
- BHB2122 Biblical Hebrew 2B

## **BTh Third Year**

### **These courses are compulsory:**

- BIB3128 Genesis
- BIB3129 Romans
- THE3121 Doctrine of the Kingdom
- THE3123 Apologetics
- THE3124 Christian Ethics

### **Select any five from these:**

- BIB3121 The Wisdom Books
- BIB3122 The General Letters
- BIB3123 The Book of Hebrews
- BIB3127 Prophetic Books
- MIS3121 World Religions
- MIS3124 Church Growth
- MIS3125 Islam
- PRA3121 Conflict and Reconciliation (*Textbook Required*)
- PRA3124 Christian Counselling 2 (*Prerequisite PRA2121*)
- PRA3125 Church Leadership
- PRA3126 Church Administration
- THE3122 The Doctrine of Revelation
- THE3125 Church History (*You cannot take this course if you have chosen THE1124*)
- THE3126 African Theology





## BACHELOR OF THEOLOGY WITH A COUNSELLING FOCUS

This is a structured BTh programme. By choosing this programme, students choose in advance to take all their electives (twelve courses) as counselling courses. Bible and Theology courses will make up 60 per cent (216 credits), and the counselling courses 40 per cent (144 credits).

### What are the courses?

#### BTh First Year

##### These courses are compulsory

- BIB1121 Essential Bible Study Principles
- BIB1123 How to Study the Bible
- PRA1122 Introduction to Youth and Children's Ministry
- THE1120 Introduction to Theology
- THE1121 Christian Foundations
- THE1122 Biblical Worldview

#### First Year (Level-5)

- CCC1121 Human Development and Christian Counselling
- CCC1127 Excellence in Christian Counselling - Ethical & Legal Issues
- CCC1128 Theoretical Foundations of Christian Counselling
- CCC1129 Biblical Basis and Introduction to Christian Counselling

#### BTh Second Year

##### These courses are compulsory:

- BIB2121 Hermeneutics (*Prerequisite for PRA2123*)
- BIB2123 Historical Books
- BIB2125 Paul's Letters
- MIS2124 The Mission of God
- THE2122 The Doctrine of Man and Sin (*Prerequisite for THE2123*)
- THE2123 The Doctrine of Salvation (*Prerequisite is THE2122*)

#### Second Year (Level-6)

- CCC2121 Psychopathology and Spiritual Conflicts
- CCC2122 Relationships, Marriage and Family Counselling
- CCC2128 Child & Adolescence Counselling
- CCC2129 Counselling Skills (*Practicum-1*)





## **BTh Third Year**

### **These courses are compulsory:**

- BIB3128 Genesis
- BIB3129 Romans
- MIS3121 World Religions
- THE3121 Doctrine of the Kingdom
- THE3123 Apologetics
- THE3124 Christian Ethics

### **Third Year (Level-7)**

- CCC3120 Pastoral Care and Counselling of People in Crisis
- CCC3121 Gerontology and Pastoral Care and Counselling
- CCC3122 Congregational Care and Community Counselling
- CCC3123 Pastoral Care and Counselling for Substance Abusers

### **What are the entrance requirements?**

To register for the **BTh with a counselling concentration**, you need to have a school-leaving certificate that grants university access. In South Africa, this is a National Senior Certificate (NSC) with four subjects at a rating of 4 (50-59 per cent) or higher. If you have an accredited tertiary qualification, we accept that in lieu of a school-leaving certificate. (If you do not qualify for direct admission to the BTh, you can start with the Higher Certificate in Christian Life or do the Higher Certificate in Christian Counselling.)

### **Textbooks Required**

For most courses, you are provided with electronic textbooks and readers, but if you choose to enrol for the BTh with a concentration in Christian Counselling, you need to purchase required counselling textbooks. These Christian counselling specific textbooks are not available on EBSCOhost and are essential in studying the integrative theology and psychology approach used in our counselling courses.





## HIGHER CERTIFICATE IN CHRISTIAN LIFE

120 CREDITS ON NQF LEVEL 5 (10 SUBJECTS OF 12 CREDITS EACH)

The HCCL offers a thorough grounding in the essentials of theological and ministerial training. The programme is suitable for pastors needing foundational theological studies and for elders, deacons, and other men and women serving actively in their churches. The three stand-out characteristics of the programme are that it is biblical (you will grow in Bible knowledge), practical (you will grow in ministry skills), and spiritual (you will grow in your walk with Christ).

There are two other reasons why you might register for the HCCL.

1. If you wish to enrol for the BTh but you do not meet the admission requirements, you can do the HCCL. When you graduate, you can continue with the BTh
2. If you have a non-theological degree and you wish to enrol for the BTh Honours, you can do the HCCL as a bridge into the Honours.

### Do I qualify?

To register for the HCCL, you need to have a school-leaving certificate. In South Africa, this is a National Senior Certificate (NSC). If you have an accredited tertiary qualification, we accept that in lieu of a school-leaving certificate.

If you do not have a school-leaving certificate, you may be admitted to the HCCL on the basis of RPL. You will be asked to complete the first five courses on probation as stand-alone subjects. If you pass them, demonstrating that the ability to study at this level, you may enrol for the HCCL.

If you complete the HCCL and wish to enrol for the BTh, 60 credits from the HCCL may be transferred to the BTh.

### ENROLMENT REQUIREMENTS

To register for any Certificate programme, prospective students require one of the following:

1. National Senior Certificate as certified by Umalusi. Applicants with different qualifications may only be admitted if they are judged equivalent by the designated equivalence-setting bodies. **NB. Students who do not have a National Senior Certificate may still apply, provided that they have appropriate academic and ministerial experience. Please contact [jane@sats.edu.za](mailto:jane@sats.edu.za)**
2. A tertiary qualification at an accredited institution registered by the Department of Education.
3. A tertiary qualification at a foreign institution accredited by a recognised accrediting body or by the institution's national government.

Certified/notarized proof of one of the above requirements should accompany the application form, together with a certified/notarized copy of the student's identification Document or valid Passport. All those who meet these criteria and whose English is of a sufficient standard, are accepted into the programme.

The Higher Certificate in Christian Life counts for a full 60 credits towards a BTh degree.





**NB.** You are required to complete this qualification within a period of 3 years.

### **How does it work?**

The HCCL requires you to earn 120 credits on NQF level 5. Since all the courses are 12 credits, you must complete 10 courses to earn your certificate. The courses are divided into compulsory and elective categories. You must do all the compulsory courses and make up the remainder of your curriculum by choosing electives.

Unless otherwise indicated, the pass mark for all assessment tasks is 50 per cent. A distinction is 80 per cent. To pass a course, you must complete all the required assessment tasks, maintain a grade average of 50 per cent or above, and score at least 40 per cent for the examination.

If you have completed prior theological studies, you may apply for exemption from courses that you have covered previously. *If this applies to you, you need to apply for exemption and provide evidence to support the exemptions. To apply for exemptions, please contact [sharon@sats.edu.za](mailto:sharon@sats.edu.za).*

### **What are the courses?**

#### **Higher Certificate in Christian Life: Curriculum 2019**

For a description of each course, please go to pages 44—49.

#### **These courses are compulsory**

- BIB1121 How to Study the Bible
- BIB1123 The Words and Works of the Lord Jesus Christ
- THE1120 Introduction to Theology
- THE1121 Christian Foundations
- THE1122 Biblical Worldview

#### **Select any five from these electives:**

- BIB1124 Old Testament Survey
- BIB1125 Deuteronomy
- BIB1122 1 Corinthians
- CYM1126 Connecting with Children (*prerequisite for CYM2127*)
- CYM2127 Walking with Wounded Children (*prerequisite is CYM1126*)
- MIS2122 Contemporary Issues in Missions
- MIS2124 The Mission of God
- PRA1121 Christian Relationships
- PRA1122 Introduction to Youth and Children's Ministry
- PRA1124 Biblical Leadership 1
- THE1123 The Holy Spirit: What the Bible teaches
- THE1124 Survey of Church History
- THE2121 The Doctrine of the Church







### **How long does it take?**

The minimum duration is one year, but the average completion time for part-time students is two years. You have a maximum of three years to finish.

**Please note:** You are required to complete 48 credits every twelve months, commencing with the date of enrolment.

### **How much does it cost?**

Please consult the website for pricing applicable to your region of the world, but please bear the following in mind when assessing the financial implications:

1. You only pay for courses when you are ready to take them. Therefore, your costs are spread over the duration of your programme
2. The tuition fees are the total cost of the programme. There are no hidden costs, no travel costs, and no accommodation costs. Most courses do not prescribe required textbooks.

Kindly note that all fees paid to SATS are non-refundable and that prices are increased annually.





## HIGHER CERTIFICATE IN CHRISTIAN COUNSELLING

### 132 CREDITS ON NQF LEVEL 5

The HCCC is an outstanding programme for training lay counsellors. It is designed for pastoral counsellors and for lay counsellors serving in the context of churches or parachurch organisations. The programme was written by Prof. Mervin van der Spuy, the former head of the Association of Christian Counsellors in South Africa. The programme is extremely comprehensive. Prof. van der Spuy believes that counsellors are best trained through an integration of theology and psychology.

#### **Do I qualify?**

To register for the HCCC, you need to have a school-leaving certificate. In South Africa, this is a National Senior Certificate (NSC). If you have an accredited tertiary qualification, we accept that in lieu of a school-leaving certificate.

If you do not have a school-leaving certificate, you may be admitted to the HCCC on the basis of RPL. You will be asked to complete the first five courses on probation as stand-alone subjects. If you pass them, demonstrating that the ability to study at this level, you may enrol for the HCCC.

If you complete the HCCC and wish to enrol for the BTh, 60 credits from the HCCC may be transferred to the BTh

#### **How does it work?**

The HCCC requires you to earn 132 credits on NQF level 5. Since all the courses are 12 credits, you must complete 11 courses to earn your certificate.

The courses are divided into compulsory (84 credits) and elective (48 credits) categories. You must do all the compulsory courses and make up the remainder of your curriculum by choosing electives.

Unless otherwise indicated, the pass mark for all assessment tasks is 50 per cent. A distinction is 80 per cent. To pass a course, you must complete all the required assessment tasks, maintain a grade average of 50 per cent or above, and score at least 40 per cent for the examination.

#### **What textbooks do I need?**

Whereas most SATS programmes do not require you to purchase textbooks, the HCCC is written around these books, which you will use in all the courses:





## TEXTBOOKS

Students are required to purchase the following textbooks. Please acquire them before you start your first counselling course:

Collins, G. 2007. *Christian Counseling: a Comprehensive Guide* (Third Edition). Thomas Nelson.

McMinn, M.R. & Campbell, C.D. (2007) *Integrative Psychotherapy: toward a Comprehensive Christian Approach*. IVP Academic

Meier, Minirth, Wichern & Ratcliff. 1999. *Introduction to Psychology and Counseling: Christian Perspectives and Applications*. 2nd Ed. Baker Books.

Tan, S. & Scalise, E.T. 2016. *Lay Counseling: Equipping Christians for a Helping Ministry*. (Revised & Updated). Zondervan.

Tan, Siang-Yang, 2011. *Counseling and Psychotherapy: A Christian Perspective*. Baker Publishing.

## What are the courses?

Check the timetable on Page 56 for availability of courses.

## Courses — 120 Credits

These Courses are compulsory:


- CCC1121 Human Development and Christian Counselling
- CCC1127 Excellence in Christian Counselling – Ethical and Legal Issues
- CCC1128 Theoretical Foundations of Christian Counselling
- CCC1129 Biblical Basis and Introduction to Christian Counselling
- CCC2121 Psychopathology and Spiritual Conflicts
- CCC2129 Counselling Skills (*Practicum-1*)
- THE1120 Introduction to Theology

## Four Electives (48 Credits):

Students may select any four of the following courses

- CCC1123 Crisis and Trauma Counselling
- CCC1124 Domestic Violence and Abuse
- CCC1125 Wellness – Personal and Spiritual Growth
- CCC1126 Introduction to Addictions
- CCC2122 Marriage and Family
- CCC2123 Congregational Care and Community Counselling
- CCC2124 Gerontology and Pastoral Counselling
- CCC2127 Medicine, Health and Healing
- CCC2128 Child and Adolescence Counselling





**Minimum study requirements:** You are required to complete 48 credits of study every 12 months (commencing with date of enrolment).

**Important Prerequisites:**

1. The Biblical Basis and Introduction to Christian Counselling (CCC 1129) is a prerequisite for all other courses. This course serves as the foundational model for the counselling program and must be taken first.
2. Human Development (CCC1121) and/or Theoretical Foundations (CCC1128) can be taken concurrently with Biblical Basis (CCC1129), but you must pass the Biblical Basis course before you can proceed with other courses and before receiving credit for Human Development or Theoretical Foundations.
3. Successfully completing Biblical Basis (CCC1129), Psychopathology (CCC 2121), and Excellence in Counselling - Ethical & Legal Issues (CCC 1127), is a prerequisite for taking the Counselling Skills Practicum (CCC2129). With permission, Ethics or Psychopathology can be taken concurrently with the practicum in the same term.
4. Successfully completing Biblical Basis (CCC1129) and Human Development (CCC1121), is a prerequisite for taking the Child & Adolescence Counselling Course (CCC2128)

**How long does it take?**

The minimum duration is one year, but the average completion time for part-time students is two years. You have a maximum of three years to finish.

**Please note:** You are required to complete 48 credits every twelve months, commencing with the date of enrolment.

**How much does it cost?**

Please consult the website <https://www.sats.edu.za> for pricing applicable to your region of the world. Kindly note that all fees paid to SATS are non-refundable and that prices are increased annually. This programme will require the purchase of textbooks.



## **STAND ALONE COURSES**

If you would like to take a single course, without enrolling for a whole qualification, you can.

Visit our website: <https://www.sats.edu.za> and select the standalone option on the application form.

You may choose any course from the list provided.

Pay the price of the course and you will be added to the class at the start of the next term in which it is offered.

### **Cost of Stand Alone Courses**

You pay only for the courses you order you can buy as many or as few as you choose.

Kindly note that all fees paid to SATS are non-refundable and that prices are increased annually.





# COURSE DESCRIPTIONS

## BIBLICAL STUDIES

- BIB 1121** **How to Study the Bible:** This is a practical course about how to study the Bible step-by-step. The course introduces you to methods and tools for serious Bible study using English Bibles.
- BIB 1122** **1 Corinthians:** This course provides an in-depth study of the exhilarating Acts of the Apostles, the Early Church, and of the Holy Spirit. This subject paints a portrait of how Christianity burst onto the scenes of the Judea-Greco-Roman world.
- BIB 1123** **The Words and Works of Jesus:** This course provides a closer look at the life and ministry of Jesus that inform the Church and Christian workers' witness.
- BIB 1124** **Old Testament Survey:** The objective of an Old Testament Survey is to provide an interpretive framework for understanding the Old Testament so that you can begin to feel at home in its pages.
- BIB 2121** **Hermeneutics:** The very nature of Scripture as the Word of God is communication, and thus, requires interpretation. To grow in these skills, students need to learn the appropriate tools and processes of analysis, and to practice the use of such devices and methods.
- BIB 2122** **The Pentateuch:** The Pentateuch is foundational to the Jewish and Christian faith. This course provides you with an overview of the Pentateuch aiming to arouse your interest in the world of the Old Testament. Equipped with a measure of background information, you will begin to comprehend more clearly the purpose of God for humanity as it unfolds in the Bible.
- BIB 2123** **The Historical Books:** This course provides an overview of the twelve Old Testament books from Joshua to Esther. This preliminary study of the Old Testament aims to introduce themes, purposes, and historical background to the historical books.
- BIB 2124** **The Book of Acts:** This course provides an in-depth study of the exhilarating Acts of the Apostles, the Early Church, and of the Holy Spirit. This subject paints a portrait of how Christianity burst onto the scenes of the Judea-Greco-Roman world.
- BIB 2125** **Paul's Letters:** This course is a study of the Apostle Paul within the first-century Greco-Roman context. This course surveys his thirteen letters and summarises his historical, theological, and pastoral contributions to the Christian faith.
- BIB 3121** **The Wisdom Books:** This course covers the origin, nature and theological purpose of the Old Testament wisdom literature (Proverbs, Job, Ecclesiastes, Psalms and Song of Songs) and brings out the relevance of these biblical books for the faith and life of the Church today.
- BIB3123** **The Book of Hebrews:** The book of Hebrews is one of the most beautifully written, powerfully argued, and theologically profound writings in the New Testament. Its central theme is to exhort readers to persevere in the faith and exhibit a life of faithfulness patterned by Jesus Christ Himself.
- BIB 3127** **The Prophetic Books:** This course presents a survey of the Old Testament prophetic books. It shows the importance of understanding the original context and appreciating the Abrahamic, Davidic, and Mosaic covenants as preparation for the New Covenant.
- BIB 3128** **Genesis:** The word genesis means "beginning," and the book of Genesis is the book of beginnings par excellence. The foundations of a biblical worldview are laid in Genesis.



## COURSE DESCRIPTIONS

- BIB 3129** **Romans:** In the Book of Romans, Paul provides the most comprehensive and systematic presentation of the gospel as the centerpiece of his theology. The argument of Romans develops five major doctrines: condemnation, justification, sanctification, election, and consecration.
- BIB 4123** **Ephesians:** Ephesians is widely celebrated as the queen of Paul's epistles. It is especially relevant for Christ-followers in Africa because it deals at length with two topics of immense importance in Africa: the power of the gospel to unite people who are natural enemies and the power of the gospel to grant the believer victory and authority over evil powers in Christ.
- BIB4124** **Old Testament:** Upon completion of this course, you will have a good introductory grasp on the Old Testament as a research field with regards to content, canoncity, history, hermeneutics, literature, and theology.
- BIB 4129** **New Testament:** This course introduces you to the environment of early Christianity, the cultural and social world of the early Church, the literature of the New Testament, critical issues of New Testament formation, and the theological message of the New Testament. You will gain a framework for further study of individual New Testament books and for appreciating the significance of these ancient, inspired writings for the life of the Church.

### MISSIOLOGY

- MIS 2122** **Contemporary Issues in Missions:** This course is a study of the issues that are critical in missions today and will help the student to develop a passion for missions in the 21st century.
- MIS 2123:** **The Historical Perspective on Missions:** This course is a study on the history of missions, briefly discussing the expansion of Christianity throughout the last 2000 years.
- MIS 2124** **The Mission of God:** This course is a study of the central mission of God evaluating His interaction with humanity through missions in a global context.
- MIS 3121** **World Religions:** This course provides an introductory level overview of the five major world religions, namely, African Traditional Religions, Islam, Judaism, Hinduism, and Buddhism.
- MIS 3124** **Church Growth:** This course examines the basis for current church growth theory and practice and compares them with Biblical principles.
- MIS 3125** **Islam:** The objective of this course is to equip and empower Christians and Church leaders to understand Islam and to engage Muslims in ways that are faithful to Christ's values and mission.
- MIS 4121** **Missiology:** This course will give you an introduction to missiology that is not limited to the "biblical foundation of mission" or to a pragmatic "how to" approach of "doing mission," but which combines these (and other) key dimensions of missiology in an integrated perspective. It also combines the dimensions of spirituality and practical planning.
- MIS 4122** **Understanding Islam:** This course provides a comprehensive introduction to Islam. The opening unit provides a general overview of Islam's origins, beliefs, and practices. The second unit examines the life of Muhammad in considerable detail, while the third compares the God revealed in the Quran (Allah) with the God of the Bible. Unit 4 examines the mission of Islam (Islamisation), noting the objectives and strategies involved. The final unit presents some current approaches Christians use to present the gospel to Muslims.



## COURSE DESCRIPTIONS

**MIS 4123 Critiquing Islam:** This course affords students who have a solid understanding of Islam to deepen their understanding through an in-depth exploration of contemporary and controversial themes. You will be provided with a selection of themes, being required to select two and frame a research paper (argumentative essay) addressing each. Themes might include topics like the origins of Islam, the status of women in Islam, the legitimacy of insider movements as a mission strategy amongst Muslims, the Islamic Reformation, or the inspiration, transmission, and organization of the Quran (Prerequisite: MIS3125 or MIS4122 or equivalent).

### PRACTICAL THEOLOGY

**CYM 1126 Connecting with Children:** This course is about the observation of children, relationship building, their agenda, and the importance of play, story-telling, and boundaries.

**CYM 2127 Walking with Wounded Children:** This course touches on the process of peace and healing with a wounded child. It includes a case study of an abused child showing how to counsel with understanding and how to examine the child after trauma.

**PRA 1121 Christian Relationships:** This course provides an introduction to the primacy of our relationship with God through different modes and principles of worship and prayer. It will also aim to inform a biblical approach to nurture your family spiritually.

**PRA1122 Introduction to Youth and Children's Ministry:** This course will assist the learner in understanding how to cultivate a child-friendly church. This course will also help guide parents and members on how to do child evangelism and understand youth trends and a variety of models of youth ministry.

**PRA 1124 Biblical Leadership:** Inspired by the example of Jesus, Biblical leadership explores key New Testament leadership models, principles, practices, and requirements with a view toward personal growth and transformational leadership development.

**PRA 2121 Christian Counselling 1:** This course introduces the student to the field of pastoral care, including its basis, goals, terminology, concepts, and techniques.

**PRA 2122 Pastoral Ministry:** This course prepares the student with the pastoral responsibilities of preaching, teaching, leading, equipping, administrating, and many other tasks in the context of the local Church.

**PRA 2123 Homiletics:** This course prepares the preacher for the construction and delivery of the sermon.

**PRA 2124 Children at Risk:** This course will help you to better understand what it would look like for children-at-risk to be meaningfully incorporated in the mission of the Church, something which a large part of the Church has either ignored or underemphasised for 2000 years. It will urge you to help correct those failings by responding appropriately in your ministry.

**PRA 3121 Conflict and Reconciliation:** This course is an in-depth study of "The Peacemaker: A Biblical Guide to Resolving Personal Conflict," bringing the Biblical principles of conflict management together in a practical way.





## COURSE DESCRIPTIONS

- PRA 3124 Christian Counselling 2:** The general themes covered in this module are group and youth counselling singleness, premarital, and marital counselling. (Prerequisite for this course is PRA2121)
- PRA 3125 Church Leadership:** This course examines many biblical, personal, and practical foundations for church leadership.
- PRA 4122 Narrative Preaching:** This course explores the history, theoretical underpinning, and primary models of narrative preaching as a foundation for equipping you to learn some narrative methods of preaching. The heart of the course requires you to prepare and deliver sermons using both first-person and third-person narrative models. The course ends with you undertaking an evaluation of your narrative sermons, both a self-assessment and a congregational assessment.
- PRA 4121 Practical Theology:** This course provides an advanced introduction to Practical Theology as a theological discipline. It includes an overview of the discipline (Unit 1), a study of research models (Unit 2), and a research paper (Unit 3).

### SYSTEMATIC THEOLOGY

- THE 1120 Introduction to Theology:** This is the foundational course for all undergraduate students. In this course, you will be introduced to SATS and our core values, common themes, and core definitions of Theology, as well as navigating the online SATS platform.
- THE 1121 Christian Foundations:** This course covers both the fundamental beliefs and spiritual practices of the Christian faith. Significant themes include repentance, faith towards God, how to study the Bible, water baptism, the Lord's Supper, prayer, authentic worship, and many more.
- THE 1122 Biblical Worldview:** The worldviews course answers the major philosophical and practical questions of life from a biblical perspective. The course defines, explains, and examines the consequences of a worldview.
- THE 1123 The Holy Spirit:** What the Bible Teaches: Correctly understanding the Bible's teaching about the person and work of the Holy Spirit is an integral part of Christian formation. The entire Christian walk is dependent upon the presence and power of God's Spirit with, in, and upon us. A proper understanding of the Holy Spirit is crucial for a healthy relationship with God and an active ministry in the Church and the world.
- THE 1124 Survey of Church History:** The Survey of Church History course provides a basic overview or survey of church history. As Christians and as students of Christian theology, you must have some grounding in this field since you are a member of the body of Christ - a body with a history (and a future).
- THE 2121 Doctrine of the Church:** Examines the nature, purpose, organisation, and ordinances of the Church. It also surveys the important aspects of church life, together with exploring various other views of the Church and its structures.
- THE 2122 The Doctrine of Man and Sin:** This subject explores man's relation to God and the cause and consequences of our sin.





## COURSE DESCRIPTIONS

- THE 2123 The Doctrine of Salvation:** This course covers Jesus' humanity and deity, his death, resurrection, and glorification. It also deals with our conversion, justification, regeneration, sanctification, and perseverance.
- THE 2124 The Doctrine of God:** This course approaches the Doctrine of God not only from a biblical perspective but also in the light of the situation that prevails in the 21st century.
- THE 3121 The Doctrine of the Kingdom:** This course helps students to comprehend the nature of the Kingdom of God, discern Satan's actual present rights and status and survey the main categories of end-time doctrine.
- THE 3122 The Doctrine of Revelation:** This course highlights the importance of understanding general and special revelation, including an appreciation of the various theories of inspiration, inerrancy, and authority of the Scriptures.
- THE 3123 Apologetics:** This course provides a fairly detailed introduction to apologetics as a Christian discipline and the various models of presentation and context. The modern contexts of apologetics (Post-modernism and the New Atheism) are also carefully considered.
- THE 3124 Christian Ethics:** This module deals with the moral implications of the gospel, introducing today's Christian worker to skills and tools that will help them engage postmodern society with clear Christian motives and persuasion.
- THE 3125 Church History:** This course provides a holistic view of church history periods, paying particular attention to significant movement, leaders and their contributions to Christianity, and the origin and distinctiveness of prominent Christian denominations (term 1 only phase out course).
- THE 3126 African Theology:** This course shows how Africans have approached theology. The course introduces the student to African Traditional Religion and the role it and Western theology have played in the development of African theology.
- THE 4241 Systematic Theology:** This course provides an orientation to the field of Systematic Theology. It includes an overview of major doctrines of the Christian faith (Unit 1), research methods (Unit 2), and a research paper (Unit 3).
- THE 4123 Child Theology:** This course explores the concept of doing theology with "the child in the midst." This is a relatively new discipline, which desperately demands the Church's attention.
- THE 4122 Science and Theology:** The purpose of this course is to show the importance of dialogue between theology and the natural sciences if we are to understand God's Word and his world correctly. The first objective of the course is for those interested in the relationships between science and theology to gain a clear picture of the complexities of the debate. The second objective is to affirm the validity and rationality of believing in God and the Bible in spite of the hostile voices claiming the converse.



# COURSE DESCRIPTIONS

## BIBLICAL LANGUAGES

- BGK 1121** **Biblical Greek 1A:** Greek 1A is the first step on the journey towards reading and interpreting the Greek New Testament.
- BGK 1122** **Biblical Greek 1B:** Greek 1B is the second step in a four-step journey towards learning to read the Greek New Testament.
- BGK 2121** **Biblical Greek 2A:** Greek 2A is the third step on the journey towards reading and interpreting the Greek New Testament. This course builds on the foundation laid in Greek 1A and 1B.
- BGK 2122** **Biblical Greek 2B:** Greek 2B is the fourth and final step on the journey towards reading and interpreting the Greek New Testament. We have spent three courses laying the foundations to read Greek. All the foundations are laid, and now we are going to put all the pieces together.
- BHB 1121** **Biblical Hebrew 1A:** The Biblical Hebrew course is the first of two modules covering the basics of Biblical Hebrew grammar.
- BHB 1122** **Biblical Hebrew 1B:** The Biblical Hebrew course is the second of two modules covering the basics of Biblical Hebrew grammar.

## ORIENTATION, RESEARCH AND OTHER COURSES

- GEN 4121** **Theological Orientation:** This course lays a foundation for postgraduate studies at SATS and exposes the student to the following aspect: The history of SATS, Theological research and writing skills, e-learning, research tools, theological sub-disciplines, and research models, levels of postgraduate studies and their implications for life and ministry.
- GEN 4122** **Directed Theological Reading:** This elective course exposes you to current scholarship in a specific field of theological studies or a combination of theological fields. You will be given a list of resources to read, analyze, interpret, compare, and apply. Assessment is done through an online oral examination where you will demonstrate your knowledge of the prescribed reading material.
- RES 4122** **Research Methodology:** This is an elective course in the B.Th. Honours programme, designed to sharpen your understanding of theological research methodology. It is a prerequisite for the following course: RES4241
- RES 4241** **Research Project:** This is an elective course in the B.Th. Honours programme in which you apply a specific research method in your research on one of the prescribed research topics. The course culminates in a research report of around 7 000 words that include references to at least 15 scholarly works.
- MRS 5240** **Research Concept Development:** This is the first, compulsory course in the MTh programme. It introduces you to advanced theological studies and the most important research methodologies. It guides you through a process of developing a research concept that will form the basis of your research project (for Coursework students) or your full thesis.
- PRA 3126** **Church Administration:** This course provides a closer look at Biblical principles for congregational management.



## CONTACT DETAILS

<b>Postal</b>	South African Theological Seminary PO Box 98988, Sloane Park, 2152 South Africa
<b>Physical</b>	37 Grosvenor Road Bryanston, 2191 South Africa
<b>GPS Coordinates</b>	S 26,052194° E 28,006309°
<b>Telephone</b>	+27 11 234 4440
<b>Helpdesk</b>	+27 11 234 4440
<b>Fax</b>	+27 11 234 4445
<b>E-mail</b>	<a href="mailto:study@sats.edu.za">study@sats.edu.za</a>
<b>Website</b>	<a href="http://www.sats.edu.za">www.sats.edu.za</a>

## BANKING DETAILS

<b>Name of Bank</b>	First National
<b>Branch</b>	Fourways Mall
<b>Branch Number</b>	251655
<b>Name of Account</b>	SA Theological Seminary
<b>Account #</b>	51321182366
<b>Swift</b>	FIRNZAJJ

To make payment online, simply click on **Pay Online** on the homepage <https://www.sats.edu.za>





# TIMETABLE

The Seminary's academic year runs from 1 February 2020 to 31 January 2021. The year is divided into four three-month terms.

Term 1	Term 2	Term 3	Term 4
1 Feb to 30 Apr	1 May to 31 Jul	1 Aug to 31 Oct	1 Nov to 31 Jan

Table 1: Four Terms

The majority of undergraduate courses in the Higher Certificate in Christian Life (HCCL), Higher Certificate in Christian Counselling (HCCC) and the Bachelor of Theology (BTh) programmes run over a three-month term. Most courses are offered twice each year, either in Term 1 and 3 or in Term 2 and 4.

You should select at least one course from each timeslot—that is, one each from Term 1, 2, 3 and 4 for the academic year. You are required to complete at least four courses each year.

## Language Courses

There are 4 Greek and Hebrew language courses. Each course is run online over a 6-month period.

To reap the full benefits of the Biblical Languages courses, you will need to take all four Greek or Hebrew courses.

BGK1121	Biblical Greek 1A	Term 1
BGK1122	Biblical Greek 1B	Term 3
BGK2121	Biblical Greek 2A	Term 1
BGK2122	Biblical Greek 2B	Term 3
BHB1121	Biblical Hebrew 1A	Term 3
BHB1122	Biblical Hebrew 1B	Term 1
BHB2121	Biblical Hebrew 2A	Term 3
BHB2122	Biblical Hebrew 2B	Term 1





# TIMETABLE

## Bachelor of Theology Honours

**Term 1** (starting 1 February ) and **Term 3** (starting 1 August)

### 12 Credit Courses (3 months)

BIB4124	Old Testament Studies
GEN4121	Theological Orientation
MIS4122	Understanding Islam (Prerequisite for MIS4123)
NTS5121	Pastoral Epistles and Pastoral Ministry
PRA4121	Practical Theology
PRA4122	Narrative Preaching
THE4122	Science and Theology

### 24 Credit Courses (6 months)

RES4241	Research Project (Prerequisite is RES4122)
---------	--

**Term 2** (starting 1 May) and **Term 4** (starting 1 November)

### 12 Credit Courses (3 months)

BIB4123	Ephesians
BIB4129	New Testament Studies
GEN4121	Theological Orientation
GEN4122	Directed Theological Reading
MIS4121	Mission as Engagement
MIS4123	Critiquing Islam (Prerequisite is MIS4122)
RES4122	Research Methodology (Prerequisite for RES4241)
THE4123	Child Theology
THE4124	Systematic Theology





# TIMETABLE

## Bachelor of Theology (and Higher Certificate in Christian Life)

**Term 1** (1 February to 30 April) and **Term 3** (1 August to 31 October)

BIB1122	1 Corinthians
BIB1123	The Words and Works of Jesus
BIB1125	Deuteronomy
CYM1126	Connecting with Children – (Prerequisite for CYM2127)
PRA1122	Introduction to Youth and Children's Ministry
THE1120	Introduction to Theology
THE1121	Christian Foundations
THE1123	Holy Spirit: What the Bible Teaches
BIB2121	Hermeneutics – (Prerequisite for PRA2123)
BIB2122	The Pentateuch
MIS2122	Contemporary Issues in Missions – Term 3 only
MIS2123	Historical Perspective on Missions – Term 1 only
PRA2121	Christian Counselling 1 – (Prerequisite for PRA3124)
PRA2122	Pastoral Ministry
THE2122	The Doctrine of Man and Sin – (Prerequisite for THE2123)
THE2124	The Doctrine of God – Term 3 only

BIB3121	The Wisdom Books
BIB3123	The Book of Hebrews
BIB3127	The Prophetic Books
BIB3129	Romans
MIS3125	Islam – Term 1 only
PRA3121	Conflict and Reconciliation
PRA3125	Church Leadership
THE3121	The Doctrine of the Kingdom
THE3123	Apologetics
THE3125	Church History – Cannot take this course if you have taken THE1124. Term 1 only

## Bachelor of Theology (and Higher Certificate in Christian Life)

**Term 2** (1 May to 31 July) and **Term 4** (1 November to 31 January)

BIB1121	How to Study the Bible
BIB1124	Old Testament Survey
PRA1121	Christian Relationships
PRA1124	Biblical Leadership 1
THE1120	Introduction to Theology
THE1122	Biblical Worldview
THE1124	Survey of Church History



## TIMETABLE

BIB2123	Historical Books
BIB2124	Book of Acts
BIB2125	Paul's Letters
BIB2126	Psalms
CYM2127	Walking with Wounded Children – (Prerequisite CYM1126)
MIS2124	The Mission of God
PRA2123	Homiletics – (Prerequisite BIB2121)
PRA2124	Children at Risk
THE2121	The Doctrine of the Church
THE2123	The Doctrine of Salvation – (Prerequisite THE2122)
BIB3122	General Letters
BIB3128	Genesis
MIS3121	World Religions
MIS3124	Church Growth – Term 4 only
PRA3124	Christian Counselling 2 – (Prerequisite PRA2121)
PRA3126	Church Administration
THE3122	The Doctrine of Revelation
THE3124	Christian Ethics
THE3126	African Theology – Term 2 only

---







# TIMETABLE

## Bachelor of Theology (Counselling Focus)

**Term 1** (1 February to 30 April) and **Term 3** (1 August to 31 October)

BIB1123	The Words and Works of Jesus
CCC1121	Human Development and Christian Counselling
CCC1128	Theoretical Foundations of Christian Counselling
CCC1129	Biblical Basis and Introduction to Christian Counselling
PRA1122	Introduction to Youth and Children's Ministry
THE1120	Introduction to Theology
THE1121	Christian Foundations

BIB2121	Hermeneutics
CCC2122	Relationships, Marriage and Family Counselling
CCC2129	Counselling Skills (Practicum -1)
THE2122	The Doctrine of Man and Sin – (Prerequisite for THE2123)

**Term 2** (1 May to 31 July) and **Term 4** (1 November to 31 January)

BIB1121	How to Study the Bible
CCC1127	Excellence in Christian Counselling – Ethical and Legal Issues
CCC1129	Biblical Basis and Introduction to Christian Counselling
THE1120	Introduction to Theology
THE1122	Biblical Worldview

BIB2123	Historical Books
BIB2125	Paul's Letters
CCC2121	Psychopathology and Spiritual Conflicts
MIS2124	The Mission of God
THE2123	The Doctrine of Salvation – (Prerequisite is THE2122)





# TIMETABLE

## Higher Certificate in Christian Counselling

**Term 1** (1 February to 30 April) and **Term 3** (1 August to 31 October)

CCC1121	Human Development and Christian Counselling
CCC1123	Crisis & Trauma Counselling
CCC1125	Wellness - Personal and Spiritual Growth
CCC1128	Theoretical Foundations of Christian Counselling
CCC1129	Biblical Basis and Introduction to Christian Counselling

CCC2122	Marriage and Family
CCC2124	Gerontology and Pastoral Counselling – term 1 only
CCC2127	Medicine, Health and Healing – term 3 only
CCC2129	Counselling Skills (Practicum-1)

**Term 2** (1 May to 31 July) and **Term 4** (1 November to 31 January)

CCC1124	Domestic Violence and Abuse
CCC1126	Introduction to Addictions
CCC1127	Excellence in Christian Counselling - Ethical & Legal Issues
CCC1129	Biblical Basis and Introduction to Christian Counselling

CCC2121	Psychopathology and Spiritual Conflicts
CCC2123	Congregational Care & Community Counselling – term 2 only
CCC2128	Child & Adolescence Counselling





