

PROSPECTUS 2019

*Prospectus*



**SATS**

Bible-based Christ-centred Spirit-led



# ENDORSEMENTS

Thank you so much to SATS, my excellent lecturers and supervisors. It has been an absolute privilege studying through SATS and I have learnt so much more than just the study material given to me. It has been an incredible journey and I am left much richer because of it.

**Leighann Fiford**

---

I don't know if the students thank you as often as they are supposed to - your service at SATS is wonderful and I thoroughly enjoy the study experience you offer. Things are done in the spirit of excellence! So to you and those around you, I pray that God will bless you in this day and I thank you for your friendly support and hard work!

**Marcel van Niekerk**

---

I would like to express my sincere gratitude and appreciation for your continuous support, feedback and advice during my completion of this course. I value your input and highly regard your closing comments with respect to my final assignment.

**Charmaine Erasmus**

---

The MySATS is perfect. It's very user-friendly and it makes the submission of assignments very easy. To write one's exams there is also a very convenient way to study. Thank you.

**Stiaan van Nieuwenhuizen**

---

I actually heard about SATS through my brother, who was at the time enrolled in the Master's program. I chose SATS because it was distance, Evangelical and very affordable.

**Derek Loseth, USA**

---

I guess to summarize, the things that stood out to me about SATS were: rigorous, inexpensive, nondenominational, online DTh offering, with many diverse students, many whom are really in full-time ministry and serious about the Lord. And basically found it by doing searches along those lines, seeing its name pop up in listings of inexpensive seminars, and reading about it on various online forums.

**Eki Taft, USA**

---

I have been studying with SATS for three years now and it has been the best, most challenging and enriching process. So grateful to SATS and everyone involved for the incredible work you all put in so that we can be enlarged and equipped. I will be forever grateful.

**Anusha Gbwriah**

---

This has been a wonderful experience. I will miss the sessions with the buddies, it was fun but also an extremely powerful learning experience. Their feedback empowered me to do better. I am very grateful for the participation.

**Dedre Olivier**



PROSPECTUS 2019

*Prospectus*



**SATS**

Bible-based Christ-centred Spirit-led



Registered with the Department of Education as a private higher education institution under the Higher Education Act, 1997.  
Certificate number 2001/HE08/005



# INDEX

Message from the Principal . . . . .	3
Mission . . . . .	4
Foundational Pillars . . . . .	4
Statement of Faith. . . . .	5
Philosophy . . . . .	5
Board of Directors. . . . .	5
Accreditation and Registration . . . . .	6
Partnering with SATS . . . . .	7
Advantages of Studying At SATS. . . . .	8
MySats. . . . .	9
Student Support . . . . .	10
Library . . . . .	11
Enrolment Procedure . . . . .	12
Graduation . . . . .	13
Short Courses . . . . .	13
Frequently Asked Questions . . . . .	14
Staff. . . . .	17
Academic Staff . . . . .	19
Programme Information . . . . .	23
Pricing . . . . .	23
Doctor of Philosophy In Theology . . . . .	24
Master of Theology . . . . .	25
Bachelor of Theology (Honours) . . . . .	26
Bachelor of Theology. . . . .	28
Higher Certificate in Christian Life . . . . .	32
Higher Certificate in Christian Counselling . . . . .	35
Course Descriptions . . . . .	38
Contact Details . . . . .	44
Banking Details. . . . .	44
Time Table . . . . .	45



# WELCOME

## **Message from the Principal: “Text and Context”**

SATS is unashamedly Bible-based and unapologetically Christ-centred. We are people of the book — although our ‘book’ is often electronic these days. Nevertheless, *the text* has always been front and centre for SATS. We love the Bible and we consider it our highest calling to ensure that our students read the Bible, know the Bible, and obey the Bible.



We do our best to ‘rightly handle the Word of truth’ (2 Tim. 2:15) and to teach our students to do the same. Since ‘all Scripture is God-breathed’ (2 Tim. 3:16), God’s servants must ‘preach the Word’ (2 Tim. 4:2). As a Seminary, we note with concern how many historically Bible-based theological institutions have drifted from their biblical foundations. We are resolute in our determination to remain true to the Scriptures as the Word of God. We love the text.

SATS is less well-known for being context-sensitive. We have been people of the text, but not always people of the context. During 2018, we recognised this as an area that needs priority attention. We have initiated a five-year plan to transform our curricula to be much more contextual in their orientation. In particular, we want to grapple meaningfully with the unique challenges, questions, and opportunities that confront God’s servants in Africa.

The greater push towards contextualisation in no way implies a lesser commitment to the Bible. We shall intensify our commitment to being both textual and contextual. We will deepen our commitment to being biblical and practical in every course we teach, since we believe that answering contextual questions from a Bible-based, Christ-centred, Spirit-led perspective is a gateway to more effective ministry.

Dr Kevin Smith



## MISSION

*Our mission is to provide Biblical, Christocentric distance education and training to Christians, and leaders in particular, within their local church environment, to equip them to be Holy Spirit empowered members of God's household.*

Our passion is to prepare Christ-centred leaders for every church. In addition to our three foundational pillars (Bible-based, Christ-centred, Spirit-led), we hold these core convictions about the nature of theology:

1. Good theology is *God-glorifying*: The goal of all theology and all ministry is to bring glory to God.
2. Good theology is *mission-minded*: All good theology is inherently missional, being in service of the mission of God. We believe that theology divorced of its missional ethos is unfaithful to the call of God.
3. Good theology is *church-based*: Theology must always be anchored in the church and in service of the church.

We chose to carry out our mission through distance education because of a heartfelt belief in church-based training as the preferred approach. We believe in 'training for ministry in ministry'; we are committed to training God's servants in the context of their ministry.



## FOUNDATIONAL PILLARS

SATS stands on a triune doctrinal foundation:

- **The unique authority of the Word of God the Father.** We believe that the Bible is the only written revelation of and from God and that it is therefore all we need for faith and life.
- **The lordship and centrality of Jesus Christ.** We believe that Jesus Christ is God the Son and the full revelation of the Godhead to humanity. He is the head of the church and the Lord of our lives. As a result, we are to base our doctrine and practice on what he said and did.
- **The ministry of the Holy Spirit.** We believe that we are to trust and obey God the Holy Spirit and that we are to embrace all that the Scriptures reveal of him and his ministry.

These foundational principles are summed up in our by-line: **Bible-based, Christ-centred, Spirit-led.**





## STATEMENT OF FAITH

We define ourselves as a Bible-based, Christ-centred, Spirit-led seminary. We are a home to a broad cross-section of Christians who believe that the Bible is the inspired, infallible Word of the Triune God, that Jesus Christ is fully God and fully man, that through his death and resurrection Jesus Christ became the only Saviour, that people are saved by grace alone through faith alone in Jesus Christ alone, that the Holy Spirit is the third Person of the Trinity who actively ministers to and through God's people, that the Lord founded and loves the church, and that Jesus Christ is coming again to judge all people.

SATS is a home for Christians from a broad diversity of churches and denominations who are comfortable with our high view of the Bible and of the gospel. We make no attempt to take a firm stance on most issues that divide evangelical believers. You will feel at home regardless of your beliefs about baptism, the Lord's Supper, women in ministry, Calvinism versus Arminianism, the age of the Earth, the end times, or any number of other debates amongst evangelical Christians.

You do not need to agree with our faith commitments to study through SATS. We teach theology from an evangelical perspective, but anyone is welcome to study with us.

You can read our Statement of Faith on our website.  
<https://www.sats.edu.za/about-us/statement-faith/>



## PHILOSOPHY

We see our role as providing *lifelong learning*<sup>1</sup> opportunities in theological and practical, church-related studies of a high academic standard. We believe that the responsibility for the learning process should be placed upon the student within the context of the local church. We see our role as a provider of reasonably priced, academically sound, Bible-based, Christ-centred, Spirit-led online training.



## BOARD OF DIRECTORS

SATS is under the governing oversight of a Board of Directors that meets five times each year. At present, the members of the Board include Carlos Caldas, Eleanor Chamberlain, Stuart Tapson, Adam Spence, Douglas Timberlake, Jennifer Mason, and Kevin Smith. Under the leadership of the Board, the Seminary has successfully maintained its policy of being debt free since its inception.

1 — Lifelong Learning describes the philosophy that in this day and age we all need to be in a continuing process of updating our skills and knowledge.





# ACCREDITATION AND REGISTRATION

All our programmes are accredited by the Council on Higher Education (CHE), the Education and Training Quality Assurer (ETQA) of the South African Qualifications Authority (SAQA), and are registered by the Department of Higher Education and Training (DHET, registration number 2001/HE08/005). The registered programmes are:

- Doctor of Philosophy in Theology
- Master of Theology
- Bachelor of Theology Honours
- Bachelor of Theology
- Higher Certificate in Christian Life
- Higher Certificate in Christian Counselling

SATS is registered as a Section 21 company (reg. no. 2002/005184/08), a PBO (18/11/13/2403), and an NPO (033-343-NPO).

We are also a founder member of the National Association of Distance Education Organisations in South Africa (NADEOSA) and we are a member of the Association of Private Providers of Education, Training and Development (APPETD), the South African Institute for Distance Education (SAIDE), the International Council for Evangelical Theological Education (ICETE), the International Council for Higher Education (ICHE), the CHEA International Quality Group (CIQG) and the World Evangelical Theological Institute Association (WETIA).

Our accreditation and Department of Education registration provide assurance that the quality of our programmes is of the highest standard. Our programmes are therefore nationally and internationally comparable and the credits earned with us are truly “portable”, i.e. they can be transferred to other accredited, registered institutions. The increasing number of international students confirms the acceptability of our programmes around the world.

Recently our MTh and PhD programmes were submitted to two of the most frequently used and highly recommended evaluators in the USA, namely the International Education Research Foundation, Inc. ([www.ierf.org](http://www.ierf.org)) and the American Association of Collegiate Registrars and Admissions Officers’ International Education Services (<http://ies.aacrao.org>), and both confirmed that these degrees represent attainment of a level of education comparable to the equivalent degrees from a regionally accredited university in the United States. Our degrees are also recognised by the German website [www.anabin.kmk.org](http://www.anabin.kmk.org) which provides information about the evaluation of foreign qualifications, the Brazilian and Argentinian governments, while the IQAS (International Qualification Assessment Service) in Alberta, Canada, an independent, secular assessment service used by many Canadian universities to establish the quality of foreign qualifications, has evaluated the SATS BTh as the local equivalent of a “three year Bachelor’s degree with a focus in theology”.





## PARTNERING WITH SATS



**Mr Hugh Goosen**  
(Ambassador)



**Miss Elsie Zondo**  
(Partnerships Administrator)

We believe in partnering with like-minded ministries, churches, institutions, and organisations, because we know that there is significant kingdom value in collaboration.

The two most common types of agreement are:

- **Articulation agreements:** If you offer a theological programme, we could have an articulation agreement that allows your graduates to further their studies at SATS.
- **Church agreements:** If your church or denomination needs to train its leaders, you could do this in collaboration with SATS. SATS provides the formal theological training, while the church provides additional support services, such as mentoring.

If a partner ministry wishes to train its leaders through SATS, we can formalise the agreement through a *Letter of Association*. Once the agreement is in place, all students linked to the associated ministry who register with SATS will receive a 10 per cent discount on the advertised tuition fees.

### **Please Note:**

1. SATS is not an accrediting agency. We cannot accredit your Bible school or ministry training programme.
2. SATS cannot offer joint programmes. The law in South African mandates that we take full and sole responsibility for all teaching-and-learning in our programmes.

To find out more about the opportunities that exist through a SATS partnership please contact [hugh@sats.edu.za](mailto:hugh@sats.edu.za)



## ADVANTAGES OF STUDYING AT SATS

When you enrol at SATS, you meet a team of committed believers who are passionate about serving Jesus by serving you. Our team is creative, innovative, dedicated, and enthusiastic about the way they teach and serve your study needs. When you enrol at SATS, you can expect to



- grow under the teaching of a seminary and a team of lecturers who believe the Bible and love the Lord (Luke 6:40);
- receive a fully-accredited qualification that is respected worldwide;
- love the convenience of instant online access to everything you need for your studies;
- experience a challenging programme that maintains high academic standards;
- enjoy fast, friendly service from academic and administrative staff;
- join a seminary that responds to the needs and inputs of its students;
- interact with peers from all around the world who love Jesus, making new friends in the process;
- learn from a diverse team of highly-qualified academics who love Jesus and the truth;
- grow with a ministry that is innovative in its use of technology;
- benefit from a programme that is simultaneously thoroughly biblical and deeply practical;
- engage with lecturers who are actively engaged in theological research; and
- rest in the knowledge that our staff prays daily for our students.



# MySats

MySats is the online learning environment or 'virtual classroom' in which you will study. It is the central hub of the Seminary, the platform that makes online learning possible wherever you live in the world.



When you enrol at SATS, you receive your account credentials for MySats, which provide access to the learning environment where you will find your courses, readers, textbooks, lecturers, classmates, assessment tasks, and so on. From MySats, you can:

- order your courses and pay for them,
- access help in text and/or video formats,
- read or borrow almost 200,000 e-books (e-library),
- download hundreds of thousands of journal articles (e-library),
- download your study materials for courses,
- submit your assignments and access your feedback,
- view recorded lectures in video or audio formats,
- participate in class discussions (forums),
- see the due dates for all your forthcoming activities,
- interact with the lecturer and other students,
- attend live lectures, including webinars,
- complete interactive lessons,
- write your examinations,
- view your academic record (e-transcript), and
- view all your financial transactions.

MySats is a high-quality, powerfully-resourced e-learning platform that provides our students with ready access to everything they need for their SATS studies in one place.



# STUDENT SUPPORT

We understand that it is not easy to study in isolation. The good news is that we have created a student support culture which serves the needs of our students. These are some of the services we provide to 'take the distance out of distance education'. You can reach any of these people by phone if you call +27 11 234-4440 and ask for them.

## General Help

For any general support requests that do not pertain to the specific categories below, please contact Grace Sikhosana at the following email address: [grace@sats.edu.za](mailto:grace@sats.edu.za). Grace is thoroughly familiar with most of SATS' operations and is eager to help.



## Enrolment

Before you enrol you are welcome to contact our efficient Enrolments' Officer, Sharon Eagle, who will assist you with any questions you may have about our courses, RPL, fees, etc. She will also be the first person to see your application form when you enrol. Call her on 011 234-4440 or email her at [sharon@sats.edu.za](mailto:sharon@sats.edu.za).



## MySats

If you need help with the MySats e-learning platform, Ann Steyn is available to assist you. Contact her at [anns@sats.edu.za](mailto:anns@sats.edu.za).



## Library

If you need help accessing or using the electronic library holdings, our Librarian, Tawanda Maenzenise [library@sats.edu.za](mailto:library@sats.edu.za), is available to help you.



## Bursaries

We offer a limited number of partial bursaries for those who simply cannot afford to study. A special bursary fund exists for students from the Eastern Cape. To apply, please email [bursaries@sats.edu.za](mailto:bursaries@sats.edu.za). Depending on the availability of funds, applications will be considered three times per annum, namely, in June, September, and December.





## STUDENT SUPPORT

### **Mentoring**

Our research shows that students who have mentor support in place generally work through their studies faster and attest to a more meaningful and successful learning experience. The SATS staff can regularly contact students, motivating and encouraging them to persevere with their studies, but it is the local, personal friend or pastor who will fulfil the role of personal support. Erika Kelbrick coordinates the mentoring programme [erika@sats.edu.za](mailto:erika@sats.edu.za).



### **Partner Support**

If you are a student at a partner ministry and you need help with administrative processes, please contact Elise [elsie@sats.edu.za](mailto:elsie@sats.edu.za).



## LIBRARY

Our electronic library provides our staff and students with online access to approximately 180,000 e-books and 16,000 academic journals. You have unlimited access to those holdings. You can loan e-books just as you would loan books from a physical library; the only difference is that you read on a computer, a tablet, or a smartphone. You can save the chapters you want to keep for future reference — the publishers of most e-books have the limit set to either 60 or 100 pages that can be downloaded. Our e-journal holdings provide you with full-text access to thousands of journals and hundreds of thousands of scholarly articles.



You can access all these holdings from the comfort of your own home. All you need to use them is an Internet connection and an electronic device on which to read them (e.g. laptop, tablet, or smartphone).

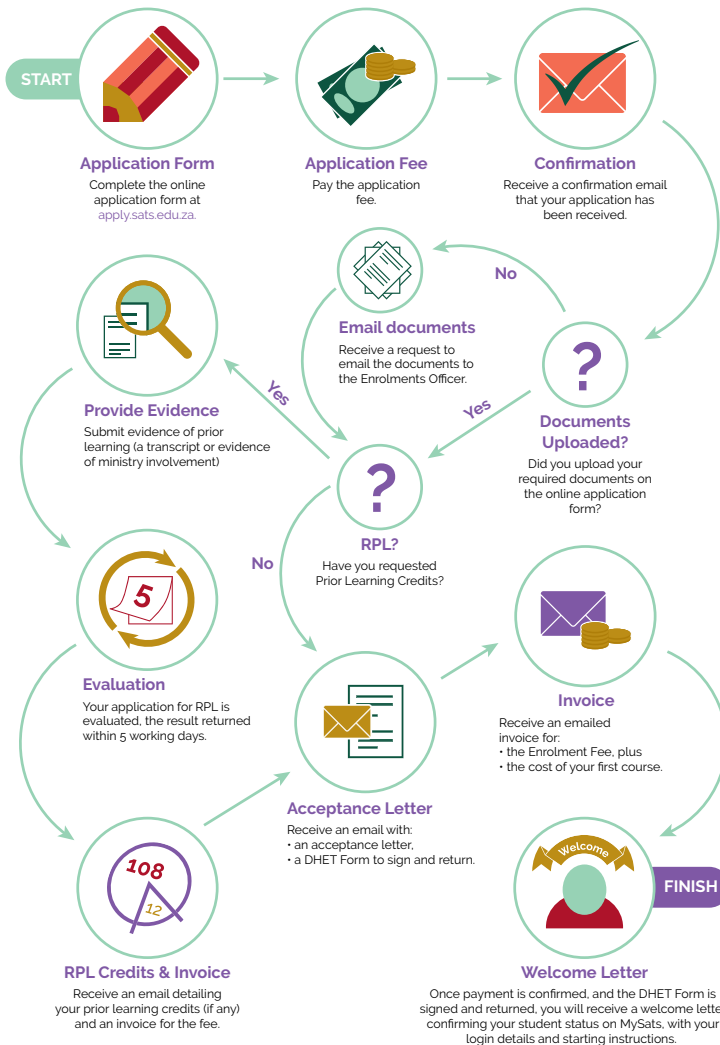


# ENROLMENT PROCEDURE

Our website has an easy Apply Online facility to help you complete an application form and upload and submit your documents.

Once you have successfully submitted the online application form, where you can also upload your supporting documents, you will receive an automatic email confirming receipt of delivery to the Enrolments Officer, who will then process your application. You will receive information regarding your application within 5 working days of your application.

## How to Enrol as a Student at SATS





## GRADUATION



The high point of a student's many years of study is the graduation ceremony, and even though the South African Theological Seminary is a distance learning institution, we still host an annual graduation ceremony. Each year we carefully select a speaker to speak on a topic that will inspire our graduands to effectively implement their learning in some form, either through ongoing or first time ministry.

We encourage family members to join our graduands for the ceremony, as this is a day of great celebration; they have spent many years sacrificing their time in completing their studies and this is the occasion to recognise their achievement.

We also encourage our students to continue their relationship with SATS after they have graduated, either as assessors, mentors or volunteers working with the staff of the Seminary. We invite all our graduates to join the SATS Alumni Association which facilitates this on-going relationship. Contact: [erika@sats.edu.za](mailto:erika@sats.edu.za).

Students who have completed all their courses by January 2019 are eligible to graduate on 18 May 2019. Contact: [jane@sats.edu.za](mailto:jane@sats.edu.za).



## SHORT COURSES

We are launching a new stream of training in 2019 — SATS short courses! Our short courses provide great teaching that you can fit into a busy schedule.

1. The short courses remain faithful to SATS' standards for high-quality online theology, characteristically Bible-based, Christ-centred, and Spirit-led.
2. The short courses are *mobile friendly* — you can do the entire course on your phone without any difficulty.
3. The short courses are *short* — ranging from two hours to ten hours to complete.
4. The short courses are *affordable* — price to be announced.
5. The short courses are *media-rich* — we keep reading to a minimum and focus on audio and video materials.
6. The short courses are *diverse* — they cover a wide range of topics, so there is something for everyone.

Our short courses make quality theological education available to everyone. Whether you are a pastor looking to stay sharp and current, a businessperson with an interest in theology, a student wanting something you can do 'on the go', or a new believer looking to grow in your relationship with Christ, our short courses are for you.





# FREQUENTLY ASKED QUESTIONS

## **Can I get credit for my prior learning?**

If you have completed prior studies in theology or a related field, you may qualify for recognition of prior learning (RPL). Through RPL, you may be exempted from certain courses, which will reduce the total cost and duration of your programme. If you believe that your prior learning meets the outcomes for some of the courses on your curriculum, you may apply for RPL. You need to submit a portfolio of evidence to support your application. We charge a fee to assess your portfolio and advise you as to how to proceed. RPL evaluations are valid for a period of three months.

To apply for RPL, please contact Sharon Eagle [sharon@sats.edu.za](mailto:sharon@sats.edu.za).

## **When can I enrol?**

You can enrol at SATS at any time of the year. You will commence your studies in the next available term.

## **What are credits? How are credits calculated?**

One credit equates to approximately 10 hours of time on task. At the undergraduate level, all courses are 12 credits, requiring approximately 120 hours of work; this includes research, writing of the assignment(s), and the examination. Since the courses at SATS run in 13 weeks or 3 months, an average student should study 8-10 hours per week in each course. If you are familiar with the American system of counting credits, 1 SU credit is equally to approximately 4 South African credits.

## **Do I need to buy textbooks?**

*You can do an entire degree at SATS without needing to purchase a single textbook!* For most courses, we provide you with electronic textbooks and readers; you do not need to purchase textbooks. If you choose to enrol for the Higher Certificate in Christian Counselling, you need to purchase four books that you can use throughout the programme. If you choose to Greek or Hebrew, you need to purchase the prescribed textbooks. A few BTh Honours courses require you to purchase a textbook, but most do not.

## **Can I take courses for non-degree purposes?**

Yes! If you wish to take selected courses for self-enrichment without committing to doing a qualification, you are welcome to enrol for them. When you finish, you can request a transcript reflecting the courses passed for non-degree purposes.

Similarly, if you are registered for a programme and wish to take extra courses, in addition to the ones required for your degree, you are welcome to do so. For instance, you might be an MTh student who wishes to take Biblical Hebrew for extra credit. In such cases, the extra courses reflect on your academic record even though they are not required for your degree.





# FREQUENTLY ASKED QUESTIONS

## **In what languages does SATS teach?**

The official language of the Seminary is English. All courses are taught in English and all the instructional documentation of the Seminary is written in English. However, students who are not first-language English speakers are graded in a fair and equitable manner.

MTh and PhD students may be permitted to write their theses and dissertations in French, Spanish, Portuguese, German, or Russian, if their supervisor is proficient in the preferred language. These students must, however, be able to read English proficiently.

## **Does SATS make special provisions for students with disabilities?**

SATS tries to accommodate students with disabilities or special needs as much as is practical. Since we teach online, students need not travel to the campus; this averts disabilities that make travel difficult. To date, we have graduated one legally blind student and we have a quadriplegic moving towards graduation. When medical needs necessitate, we grant students with disabilities extra time and we may allow them to submit oral assignments and examination answers instead of typed ones. Visually impaired students use 'text-to-speech' and 'speech-to-text' technologies.

## **Will my denomination recognise my degree from SATS?**

There are a number of denominations currently enrolling students at SATS for their theological studies. You will need to contact the head of your denomination in order to find out if the SATS degree meets their denominational requirements. SATS does not ordain ministers.

## **Will my degree from SATS be recognised overseas?**

South African degrees are well respected overseas and, since SATS has the highest level of accreditation in South Africa, most foreign institutions will admit our graduates to further studies (see Accreditation and Registration). However, each institution is sovereign with respect to which applicants it admits, so no institution local or international is obliged to admit a SATS graduate (or, for that matter, a graduate from any other institution).

## **Does SATS offers bursaries and scholarship?**

Yes, we have a small bursary fund for those who cannot afford to study. To apply, please email [bursaries@sats.edu.za](mailto:bursaries@sats.edu.za). Funds permitting, applications are considered three times per year.



## FREQUENTLY ASKED QUESTIONS

### **Does SATS have a code of conduct?**

Yes. We expect all our students to conduct their academic affairs associated with the Seminary in a way that befits Christ's disciples. Plagiarism, for example, is unacceptable, as is copying another student's work or making any defamatory remarks about the seminary, its staff, or fellow students. The full code of conduct is available on our website and in the Student Handbook.

### **How can I log a complaint or a grievance?**

Should you have reason to query the way in which the assessment of your assignments or examinations has been conducted, or if you wish to lay a complaint against a staff member, or if you have a grievance about any other matter related to your studies, you should follow the procedures laid out in the Student Handbook.

### **Do SATS' facilities comply with health-and-wellness regulations?**

Yes, we have a detailed policy with accompanying procedures to ensure that our campus is safe and secure. Since students do not work on campus, this mostly affects staff. The full policy is available on our website and in the Student Handbook.

### **Do I need to sign a registration contract with SATS?**

The Application Form functions as our registration contract. When you sign the Application Form, you agree to abide by the policies of the Seminary. The Department of Higher Education and Training requires you to sign its 'Confirmation of Programme' form when you register.



# STAFF

## Senior Management



**Principal**  
Dr Kevin Smith  
DLitt, PhD



**Head of Academics**  
Dr Johannes Malherbe  
DTh



**General Manager**  
Mr Doug Timberlake  
MBA, BTh Hons



**Projects Director**  
Mrs Jenny Mason  
BTh

---

## Administrative Team



**Head of Programme Delivery**  
Dr Willem Semmelink  
DTh



**Accountant**  
Mr Victor Kunda  
BCom Informatics, BCompt



**Ambassador**  
Mr Hugh Goosen  
MTh, PhD Cand.



**Registrar**  
Mrs Jane Meyer  
BA



**Registrar**  
Mrs Marilyn Schott  
BTh



**Head of Administration**  
Mrs Grace Sikhosana



**Partnership Administrator**  
Miss Elsie Zondo



**Enrollments Officer**  
Miss Sharon Eagle



**Administrator**  
Mr Chris Ndlovu

---

## Support Team



**Librarian**  
Mr Tawanda Maenzanise  
BPsych, MSocSci



**Assistant Librarian**  
Mr Jabu Mgnuni



**Student Counsellor**  
Mrs Bev van Rensburg  
MTh



**Student Liaison Officer**  
Mrs Erika Kelbrick  
BSoc Psi, BAHons



**Receptionist**  
Mrs Lindiwe Sibisi



# STAFF

## Technical Support Team



**IT Manager**  
Mr Louis Krasso  
Dip Eng



**MySats Manager**  
Mr Mathieu Pelletier  
MA



**Media Manager**  
Mr Marno Kirstein  
MA



**Programmer**  
Mr Timothy Solomon  
BIS: Multi-Media



**Quality Assurer**  
Mr Ruan Huysen  
BTh Hons



**MySats Support**  
Mrs Ann Steyn

---

## Executive Secretary



**Executive Secretary**  
Lonel Fisher

---

## Maintenance Team



**Groundsman**  
Mr Austin Banda



**Cleaner**  
Mrs Nandipha Mtshali



# ACADEMIC STAFF

## PROGRAMME COORDINATORS



**Dr Johannes Malherbe**  
DTh  
Head of Academics  
johannes@sats.edu.za



**Dr Willem Semmelink**  
DTh  
Programme Coordinator for HCCL & BTh  
willem@sats.edu.za



**Prof. Mervin van der Spuy**  
DTh  
Programme Coordinator for HCCLC  
mervin@sats.edu.za



**Dr Jesse Kipimo**  
DTh  
Programme Coordinator for BTh Honours  
jesse@sats.edu.za



**Dr Robert Falconer**  
PhD  
Programme Coordinator for MTh & PhD  
robert@sats.edu.za

## TEACHING TEAM

These are the course lecturers (facilitators) who teach courses for SATS. All the listed qualifications are from accredited institutions.



**Dr Seyram Amenyedzi**  
PhD



**Dr Robert Brodie**  
PhD



**Dr Zoltan Erdey**  
PhD



**Dr Robert Falconer**  
PhD



**Dr Jesse Kipimo**  
PhD



**Dr Pieter Labuschagne**  
PhD



**Dr Daniel Liroy**  
PhD



**Dr Modisa Mzondi**  
DLitt et Phil (x2)



**Dr Mark Pretorius**  
PhD



**Prof. Mervin van der Spuy**  
DTh



**Dr Cornelia van Deventer**  
PhD



**Dr George Coon**  
PhD





# ACADEMIC STAFF

## TEACHING TEAM (continued)



**Dr Jan Grobbelaar**  
PhD



**Dr Abraham Byeong Jun**  
PhD



**Dr Bert Watson**  
PhD



**Jose de Carvalho**  
MTh



**Felix Kantondo**  
MTh



**Pelham Lessing**  
MPhil



**Tawanda Maenzanise**  
MSocSci



**Batanayai Manyika**  
MPhil



**Mathieu Pelletier**  
MA, MA



**Beverley van Rensburg**  
MTh



**David Woods**  
MTh



**Hendry Mashile**  
BTh, MBA



**Mzayifani Mzebetshana**  
MTh, PhD cand.



**Izaak Connway**  
BTh Hons



**Estelle Crafford**  
BTh



**Jill Gorven**  
BTh Hons



**Ruan Huysen**  
BTh Hons



**Patrick Mutombo**  
BTh



**Marian Smith**  
BTh Hons



**Bert Barnes**  
MTh Cand.



**Jonathan Tudhope**  
BTh Hons





# ACADEMIC STAFF

## TEACHING TEAM (continued)



**Michelle Kleynhans**  
BTh Hons



**Louie Naidoo**  
BTh Hons



**Sue Pneumaticatos**  
BTh Hons



**Yvonne Roberg**  
BTh Hons



**Selma Rudd**  
BA, HCCS



**Adrian Tambllyn-Watts**  
MTh



**Suzanne van der Merwe**  
BTh Hons

## SUPERVISING TEAM



**Dr Johannes Malherbe**  
DTh, Old Testament, SU



**Dr Annang Asumang**  
PhD, New Testament, SATS



**Dr Robert Brodie**  
PhD, Practical Theology,  
St Augustine's



**Dr Bill Domeris**  
PhD, New Testament,  
University of Durham



**Dr Zoitan Erdey**  
PhD, New Testament, SATS



**Dr Robert Falconer**  
PhD, Systematic Theology, SATS



**Dr Jesse Kipimo**  
DTh, Missiology, UNISA



**Dr Mark Pretorius**  
PhD, Systematic Theology, UP



**Dr Modisa Mzondi**  
DLitt et Phil, Biblical Studies, UJ  
DLitt et Phil, Theology, UJ



**Dr Cornelia van Deventer**  
PhD, New Testament, SU



**Dr Seyram Amenyezi**  
PhD, Missiology, SU



**Dr Pieter Labuschagne**  
PhD, Old Testament, UP



**Prof Dan Lioy**  
PhD, New Testament, UNW



**Dr Vincent Atterbury**  
DTh, Practical Theology, UNISA



**Dr Abraham Byeong Jun**  
PhD, Missionology, UNW



**Dr Jan Grobbelaar**  
DTh, Practical Theology, SU



# ACADEMIC STAFF

## SUPERVISING TEAM (continued)



**Dr Callie Joubert**  
PhD, Philosophy, UKZN  
DPhil, Psychology, UJ



**Dr Vernoni Kruger**  
DLitt, Biblical Greek, SU



**Dr Kevin Smith**  
DLitt, Biblical Greek, SU  
PhD, Old Testament, SATS



**Dr Victor Nakah**  
DTh, Practical Theology, SU



**Dr Peter Penner**  
DTh, Missiology, UNISA;  
DHabil, Missiology, Karoli Gaspar  
University



**Dr Christopher Pepler**  
DTh, Practical Theology, UZ



**Dr David Roldan**  
PhD, Systematic Theology, SATS



**Dr Alberto Roldan**  
PhD, Theology, Instituto  
Universitario ISEDET



**Dr Antonio Barro**  
PhD, Missiology,  
Fuller Theological Seminary



**Dr Norberto Saracca**  
PhD, Theology, University of  
Birmingham



**Dr Willem Semmelink**  
DTh, Practical Theology, UNISA



**Dr Roger Tucker**  
PhD, Practical Theology, UP



**Dr Noel Woodbridge**  
DTh, Practical Theology, UNISA



**Dr Gabriel Ndlovu**  
PhD, Christian Ethics, SATS



**Dr Godfrey Harold**  
PhD, Systematic Theology, UWC



**Dr Nicolette Joubert**  
PhD, Psychology, UNW



**Dr George Coon**  
PhD, Systematic Theology,  
University of Toronto



**Dr Shaun Joynt**  
PhD, Practical Theology, UP



**Dr Leonard Mare**  
DLitt et Phil,  
Biblical Studies, UJ (RAU)



**Dr Chuck Van Engen**  
PhD, Missiology,  
Free University of Amsterdam



**Batanayi Manyika**  
MPhil, University of Stellenbosch  
PhDc, New Testament, SATS



**Vernon Light**  
MTh, New Testament, UFH





## PROGRAMME INFORMATION

SATS offers biblically based, academically rigorous, and practically relevant programmes. Like Hugh of St. Vincent, we believe education is the pursuit of wisdom and virtue, both of which are ultimately found in Christ through friendship with God. We design our programmes and our courses with the dual ambition of being both informative and transformative. We strive to engage the text and the context, the Word and the world in ways that are God-glorifying and missional.

SATS is known for providing rich online learning experiences. Our MySats platform affords our students a world-class portal for e-learning, connecting you to your study materials, fellow students, course facilitator, library holdings, and assessment tasks. We aim to take the distance out of distance education by automating processes that can and should be instant, freeing our staff to offer fast and friendly service where the personal touch is needed.

We serve people who are committed to the Lord Jesus Christ, who love and respect the Word of God, and dedicate their lives to advancing the kingdom of God through practical ministry. Like Pierre de la Ramée, we believe that theology is 'the doctrine of living well for God'.

Since all our teaching-and-learning takes place online, you will need regular, personal access to the Internet. SATS courses can be completed on a smartphone or a tablet, but a personal computer is desirable for writing longer essays.



## PRICING

Please refer to the website ([www.sats.edu.za](http://www.sats.edu.za)) for course and programme prices. When you study the prices, please bear the following in mind:

- 1. Total cost.** Our prices constitute the total cost of the programme. There are no hidden costs, since there is no required travel, no cost for accommodation, and almost no textbooks that you are required to purchase. For most tertiary programmes, the costs of travel, accommodation, and textbooks far surpass the cost of tuition.
- 2. Discounts.** In our undergraduate programmes, we offer a 15 per cent discount for bulk orders of four or more courses.
- 3. Pay per course.** You only need to pay for the courses or phases that you are taking, which means that the total cost of your studies is spread over the duration of your study programme.
- 4. No refunds.** If for some reason you elect to cancel your enrolment in a course or withdraw from your study programme, no refunds will be given.



## DOCTOR OF PHILOSOPHY IN THEOLOGY

### 360 CREDITS ON NQF LEVEL 10

Our PhD is designed to raise up scholar-leaders in various fields of Christian ministry. It is a fully-accredited online programme that provides the opportunity for ground-breaking theological research.

#### **Do I qualify?**

To be admitted to the PhD, you must have achieved excellent results in a relevant and accredited master's degree, such as an MTh. If you are unsure, you can apply online; there is no cost and no obligation.

#### **How does it work?**

The PhD is a research degree that culminates in an original dissertation of 80,000-100,000 words. The learning journey is divided into five phases.

**Phase 1** begins when you enrol. It consists of two online courses: GEN4121 Theological Orientation and MRS5240 Research Concept Development.

**Phase 2** requires you to draft and submit a formal research proposal, which you do in consultation with your appointed supervisor, a scholar specialising in your research area. The phase ends when SATS' Research Committee approves your research proposal.

**Phases 3-4** are where you conduct the research and write the dissertation, under the tutelage of your appointed supervisor.

**Phase 5** is about examination! You submit your dissertation for internal and external examination, making the required improvements. You must also submit an article based on the thesis. The PhD journey culminates in the online oral defence. This takes place after the dissertation passes both the internal and external evaluation process. The student is required to defend his or her thesis by responding to questions posed by a team of experts in the chosen fields of study.

#### **How long does it take?**

The minimum duration is two years, but the average completion time is 3-5 years. You have a maximum of six years to finish.

#### **How much does it cost?**

Please consult the website for pricing applicable to your region of the world, but please bear the following in mind when assessing the financial implications:

1. You pay at the beginning of each phase, so the tuition is spread over 3-5 years (the average time it takes to finish).
2. The tuition fees are the total cost of the programme. There are no hidden costs, no travel costs, no accommodation costs, and no prescribed books to purchase. For many PhD programmes, these 'hidden' costs can easily double or triple the total cost.

Kindly note that all fees paid to SATS are non-refundable and that prices are increased annually.





## MASTER OF THEOLOGY 180 CREDITS ON NQF LEVEL 9

Our MTh is a research-based degree that is fully accredited and completely online. The degree takes the form of a substantial research project on a topic that is relevant to your life or ministry. You conduct the research under the guidance of a specialist supervisor.

### **Do I qualify?**

To be admitted to the MTh, you must have a relevant, accredited four-year Bachelor's degree or a Bachelor Honours degree, or a BTh Honours. If you are unsure whether you qualify, you can apply online; there is no cost and no obligation.

### **How does it work?**

The MTh is a research degree that culminates in an original thesis of 40,000-50,000 words. The process is divided into five phases.

**Phase 1** begins when you enrol. It consists of a two online courses: GEN4121 Theological Orientation and MRS5240 Research Concept Development.

**Phase 2** requires you to draft and submit a formal research proposal, which you do in consultation with your appointed supervisor, a scholar specialising in the field of the research. The phase ends when SATS' Research Committee approves your research proposal.

**Phases 3-4** are where you conduct the research and write the thesis, under the tutelage of your appointed supervisor.

**Phase 5** is about examination! You submit your dissertation for internal and external examination, making the required improvements. You must also submit an article based on the thesis.

### **How long does it take?**

The minimum duration is two years, but the average completion time is 3-4 years. You have a maximum of five years to finish.

### **How much does it cost?**

Please consult the website <https://www.sats.edu.za> for pricing applicable to your region of the world, but please bear the following in mind when assessing the financial implications:

1. You pay at the beginning of each phase, so the tuition is spread over 3-4 years (the average completion time).
2. The tuition fees are the total cost of the programme. There are no hidden costs, no travel costs, no accommodation costs, and no prescribed books to purchase. For many MTh programmes, these 'hidden' costs can easily double or triple the total cost.

Kindly note that all fees paid to SATS are non-refundable and that prices are increased annually.





## BACHELOR OF THEOLOGY (HONOURS) 120 CREDITS ON NQF LEVEL 8

The BTh Honours is a one-year postgraduate degree that builds on a three-year degree. You would be likely to choose the BTh Honours for one of two reasons. Firstly, it serves as a bridge between Bachelor's level coursework and Master's level research. Secondly, it provides a potential access point into theological studies for students who have degrees in other disciplines.

### **Do I qualify?**

There are two ways to gain access to the BTh Honours.

1. You have a three-year BTh or equivalent degree.
2. You have a Bachelor's degree in another field accompanied by at least at least 120 credits of theological studies (e.g. an accredited Certificate or Diploma in Theology).

If you have a non-theological Bachelor's degree, you can do the required bridging coursework with SATS to gain access to the BTh Hons. If you are unsure, you can apply online.

### **How does it work?**

The Honours curriculum consists of a variety of 12 and 24 credit courses. The 24 credit courses run over six months, while the 12-credit courses take three months to complete. There is only one compulsory course. You must accumulate a minimum of 120 credits to complete the BTh Hons.

Unless otherwise indicated, the pass mark for all assessment tasks is 50 per cent. A distinction is 75 per cent. To pass a course, you must complete all the required assessment tasks, maintain a grade average of 50 per cent or above, and score at least 40 per cent for the examination.

### **Compulsory Course**

GEN4121 Theological Orientation (12 credits)

### **24-Credit Electives**

- OTS4241 Old Testament
- NTS4241 New Testament
- THE4241 Systematic Theology
- THE4242 Science and Theology
- RES4241 Research Project (*RES4122 is a prerequisite for this course*)





## 12-Credit Electives

- RES4122 Research Methodology
- GEN4122 Directed Theological Reading
- PRA4121 Practical Theology
- MIS4121 Missiology
- THE4123 Child Theology
- MIS4122 Understanding Islam (*prerequisite for MIS4123*)
- MIS4123 Critiquing Islam (*prerequisite is MIS4122*)
- PRA4122 Narrative Preaching
- BIB4123 Ephesians

### How long does it take?

A full-time student would expect to finish the BTH honours in one year but the average time for part-time students to complete the Honours programme is 2½ years. You have a maximum of three years to finish.

**Please note:** You are required to complete 48 credits every twelve months, commencing with the date of enrolment.

### How much does it cost?

Please consult the website for pricing applicable to your region of the world, but please bear the following in mind when assessing the financial implications:

1. You only pay for courses when you are ready to take them. Therefore, your costs are spread over the duration of your programme.
2. The tuition fees are the total cost of the programme. There are no hidden costs, no travel costs, and no accommodation costs. Most courses do not prescribe required textbooks.

Kindly note that all fees paid to SATS are non-refundable and that prices are increased annually.





## BACHELOR OF THEOLOGY

360 CREDITS ON NQF LEVEL 7 (30 SUBJECTS OF 12 CREDITS EACH)

The BTh is the ideal preparation for those called to pastoral ministry or other forms of vocational Christian service. Our BTh contains a strong, balanced focus on Bible, theology, and ministry.

### Do I qualify?

To register for the BTh, you need to have a school-leaving certificate that grants university access. In South Africa, this is a National Senior Certificate (NSC) with four subjects at a rating of 4 (50-59 per cent) or higher. If you have an accredited tertiary qualification, we accept that in lieu of a school-leaving certificate. (If you do not qualify for direct admission to the BTh, you can start with the Higher Certificate in Christian Life.)

### How does it work?

The BTh requires you to earn 360 credits, spread across NQF levels 5-7, where first-year courses are on level 5 and third-year courses on level 7. Since all the courses are 12 credits, you must complete 30 courses to earn your degree. You must earn 120 credits at the exit level; that is, you must do 10 third-year courses.

The courses are divided into **compulsory** and **elective** categories. You must do all the compulsory courses and make up the remainder of your curriculum by choosing electives.

Unless otherwise indicated, the pass mark for all assessment tasks is 50 per cent. A distinction is 80 per cent. To pass a course, you must complete all the required assessment tasks, maintain a grade average of 50 per cent or above, and score at least 40 per cent for the examination.

If you have completed prior theological studies, you may apply for exemption from courses that you have covered previously. *If this applies to you, you need to apply for exemption and provide evidence to support the exemptions. To apply for exemptions, please contact [sharon@sats.edu.za](mailto:sharon@sats.edu.za).*





## What are the courses?

### BTh First Year

Please note, the first-year curriculum consists of 10 courses, of which 6 courses are compulsory.

#### These courses are compulsory

- BIB1121 Essential Bible Study Principles
- BIB1123 The Words and Works of Jesus
- PRA1122 Introduction to Youth and Children's Ministry
- THE1120 Introduction to Theology
- THE1121 Christian Foundations
- THE1122 Biblical Worldview

#### Choose any four courses from the following electives:

If you select the Greek Courses you need to complete both at level 1 and both at level 2

- BIB1122 1 Corinthians
- BIB1124 Old Testament Survey
- CYM1126 Connecting with Children (*prerequisite for CYM2127*)
- PRA1121 Christian Relationships
- PRA1124 Biblical Leadership
- THE1123 The Holy Spirit: What the Bible teaches.
- THE1124 Survey of Church History
- BGK1121 Biblical Greek 1A (*Two Textbooks Required*)
- BGK1122 Biblical Greek 1B (*Prerequisite BGK1121*)
- BHB1121 Biblical Hebrew 1A (*Textbook Required*)
- BHB1122 Biblical Hebrew 1B (*Prerequisite BHB1121*)

**NB.** To reap the full benefits of the Biblical Language course, you will need to take all 4 Greek or Hebrew courses.

**Minimum study requirements:** You are required to complete 48 credits of study every 12 months (commencing with date of enrolment).





## **BTh Second Year**

### **These courses are compulsory:**

- BIB2121 Hermeneutics (*prerequisite for PRA2123*)
- BIB2123 Historical Books
- BIB2125 Paul's Letters
- MIS2124 Introduction to Missions
- THE2122 The Doctrine of Man and Sin (*prerequisite for THE2123*)
- THE2123 The Doctrine of Salvation (*prerequisite is THE2122*)

### **Select any four from these:**

- BIB2122 The Pentateuch
- BIB2124 Book of Acts
- CYM2127 Walking with Wounded Children (*prerequisite is CYM1126*)
- MIS2122 Contemporary Issues in Missions *Only available in Term 3*
- MIS2123 The Historical Perspective on Missions *Only available in Term 1*
- PRA2121 Christian Counselling 1 (*prerequisite for PRA3124*)
- PRA2122 Pastoral Ministry
- PRA2123 Homiletics (*prerequisite is BIB2121*)
- PRA2124 Children at Risk
- THE2121 The Doctrine of the Church
- THE2124 The Doctrine of God. *Only available in Term 3*
- BGK2121 Biblical Greek 2A (*Prerequisite BGK1122*)
- BGK2122 Biblical Greek 2B (*Prerequisite BGK2121*)

## **BTh Third Year**

### **These courses are compulsory:**

- BIB3128 Genesis
- BIB3129 Romans
- THE3121 Doctrine of the Kingdom
- THE3123 Apologetics
- THE3124 Christian Ethics

### **Select any five from these:**

- BIB3121 The Wisdom Books
- BIB3122 The General Letters
- THE3125 Church History
- BIB3127 Prophetic Books
- MIS3121 World Religions
- MIS3124 Church Growth
- MIS3125 Islam *Only available in Term 1*
- PRA3121 Conflict and Reconciliation (*Textbook Required*)
- PRA3124 Christian Counselling 2 (*Prerequisite PRA2121*)
- PRA3125 Church Leadership
- PRA3126 Church Administration
- THE3122 The Doctrine of Revelation
- THE3126 African Theology *Only available in Term 2*







## **STAND ALONE COURSES**

If you would like to take a single course, without enrolling for a whole qualification, you can.

Visit our website: <https://www.sats.edu.za> and select the standalone option on the application form.

You may choose any course from the list provided.

Pay the price of the course and you will be added to the class at the start of the next Term in which it is offered.

### **Cost of Stand Alone Courses**

You pay only for the courses you order you can buy as many or as few as you choose.

Kindly note that all fees paid to SATS are non-refundable and that prices are increased annually.





## HIGHER CERTIFICATE IN CHRISTIAN LIFE

120 CREDITS ON NQF LEVEL 5 (10 SUBJECTS OF 12 CREDITS EACH)

The HCCL offers a thorough grounding in the essentials of theological and ministerial training. The programme is suitable for pastors needing foundational theological studies and for elders, deacons, and other men and women serving actively in their churches. The three stand-out characteristics of the programme are that it is biblical (you will grow in Bible knowledge), practical (you will grow in ministry skills), and spiritual (you will grow in your walk with Christ).

There are two other reasons why you might register for the HCCL.

1. If you wish to enrol for the BTh but you do not meet the admission requirements, you can do the HCCL. When you graduate, you can continue with the BTh
2. If you have a non-theological degree and you wish to enrol for the BTh Honours, you can do the HCCL as a bridge into the Honours.

### Do I qualify?

To register for the HCCL, you need to have a school-leaving certificate. In South Africa, this is a National Senior Certificate (NSC). If you have an accredited tertiary qualification, we accept that in lieu of a school-leaving certificate.

If you do not have a school-leaving certificate, you may be admitted to the HCCL on the basis of RPL. You will be asked to complete the first five courses on probation as stand-alone subjects. If you pass them, demonstrating that the ability to study at this level, you may enrol for the HCCL.

If you complete the HCCL and wish to enrol for the BTh, 60 credits from the HCCL may be transferred to the BTh.

### ENROLMENT REQUIREMENTS

To register for any Certificate programme, prospective students require one of the following:

1. National Senior Certificate as certified by Umalusi. Applicants with different qualifications may only be admitted if they are judged equivalent by the designated equivalence-setting bodies. **NB. Students who do not have a National Senior Certificate may still apply, provided that they have appropriate academic and ministerial experience. Please contact [jane@sats.edu.za](mailto:jane@sats.edu.za)**
2. A tertiary qualification at an accredited institution registered by the Department of Education.
3. A tertiary qualification at a foreign institution accredited by a recognised accrediting body or by the institution's national government.

Certified/notarized proof of one of the above requirements should accompany the application form, together with a certified/notarized copy of the student's identification Document or valid Passport. All those who meet these criteria and whose English is of a sufficient standard, are accepted into the programme.





The Higher Certificate in Christian Life counts for a full 60 credits towards a BTh degree.

**NB.** You are required to complete this qualification within a period of 3 years.

### **How does it work?**

The HCCL requires you to earn 120 credits on NQF level 5. Since all the courses are 12 credits, you must complete 10 courses to earn your certificate.

The courses are divided into compulsory and elective categories. You must do all the compulsory courses and make up the remainder of your curriculum by choosing electives.

Unless otherwise indicated, the pass mark for all assessment tasks is 50 per cent. A distinction is 80 per cent. To pass a course, you must complete all the required assessment tasks, maintain a grade average of 50 per cent or above, and score at least 40 per cent for the examination.

If you have completed prior theological studies, you may apply for exemption from courses that you have covered previously. *If this applies to you, you need to apply for exemption and provide evidence to support the exemptions. To apply for exemptions, please contact [sharon@sats.edu.za](mailto:sharon@sats.edu.za).*

### **What are the courses?**

#### **Higher Certificate in Christian Life: Curriculum 2018**

For a description of each course, please go to page 38 — 43.

#### **These courses are compulsory**

- BIB1121 Essential Bible Study Principles
- BIB1123 The Words and Works of the Lord Jesus Christ
- THE1120 Introduction to Theology
- THE1121 Christian Foundations
- THE1122 Biblical Worldview

#### **Select any five from these electives:**

- BIB1124 Old Testament Survey
- BIB1122 1 Corinthians
- CYM1126 Connecting with Children (*prerequisite for CYM2127*)
- CYM2127 Walking with Wounded Children (*prerequisite is CYM1126*)
- MIS2122 Contemporary Issues in Missions *Only available in Term 3*
- MIS2124 Introduction to Missions
- PRA1121 Christian Relationships
- PRA1122 Introduction to Youth and Children's Ministry
- PRA1124 Biblical Leadership 1
- THE1123 The Holy Spirit: That the Bible teaches
- THE1124 Survey of Church History
- THE2121 The Doctrine of the Church





### **How long does it take?**

The minimum duration is one year, but the average completion time for part-time students is two years. You have a maximum of three years to finish.

**Please note:** You are required to complete 48 credits every twelve months, commencing with the date of enrolment.

### **How much does it cost?**

Please consult the website for pricing applicable to your region of the world, but please bear the following in mind when assessing the financial implications:

1. You only pay for courses when you are ready to take them. Therefore, your costs are spread over the duration of your programme
2. The tuition fees are the total cost of the programme. There are no hidden costs, no travel costs, and no accommodation costs. Most courses do not prescribe required textbooks.

Kindly note that all fees paid to SATS are non-refundable and that prices are increased annually.





## HIGHER CERTIFICATE IN CHRISTIAN COUNSELLING

### 132 CREDITS ON NQF LEVEL 5

The HCCC is an outstanding programme for training lay counsellors. It is designed for pastoral counsellors and for lay counsellors serving in the context of churches or parachurch organisations. The programme was written by Prof. Mervin van der Spuy, the former head of the Association of Christian Counsellors in South Africa. The programme is extremely comprehensive. Prof. van der Spuy believes that counsellors are best trained through an integration of theology and psychology.

#### **Do I qualify?**

To register for the HCCL, you need to have a school-leaving certificate. In South Africa, this is a National Senior Certificate (NSC). If you have an accredited tertiary qualification, we accept that in lieu of a school-leaving certificate.

If you do not have a school-leaving certificate, you may be admitted to the HCCC on the basis of RPL. You will be asked to complete the first five courses on probation as stand-alone subjects. If you pass them, demonstrating that the ability to study at this level, you may enrol for the HCCC.

If you complete the HCCC and wish to enrol for the BTh, 60 credits from the HCCC may be transferred to the BTh

#### **How does it work?**

The HCCC requires you to earn 132 credits on NQF level 5. Since all the courses are 12 credits, you must complete 11 courses to earn your certificate.

The courses are divided into compulsory (84 credits) and elective (48 credits) categories. You must do all the compulsory courses and make up the remainder of your curriculum by choosing electives.

Unless otherwise indicated, the pass mark for all assessment tasks is 50 per cent. A distinction is 80 per cent. To pass a course, you must complete all the required assessment tasks, maintain a grade average of 50 per cent or above, and score at least 40 per cent for the examination.

#### **What textbooks do I need?**

Whereas most SATS programmes do not require you to purchase textbooks, the HCCC is written around these books, which you will use in all the courses:





## TEXTBOOKS

Students are required to purchase the following textbooks. Please acquire them before you start your first counselling course:

Collins, G. 2007. *Christian Counseling: a Comprehensive Guide* (Third Edition). Thomas Nelson.

McMinn, M.R. & Campbell, C.D. (2007) *Integrative Psychotherapy: toward a Comprehensive Christian Approach*. IVP Academic

Meier, Minirth, Wichern & Ratcliff. 1999. *Introduction to Psychology and Counseling: Christian Perspectives and Applications*. 2nd Ed. Baker Books.

Tan, S. & Scalise, E.T. 2016. *Lay Counseling: Equipping Christians for a Helping Ministry*. (Revised & Updated). Zondervan.

Tan, Siang-Yang, 2011. *Counseling and Psychotherapy: A Christian Perspective*. Baker Publishing.

### What are the courses?

Check the timetable on Page 45 for availability of courses.

### Courses — 120 Credits

All Six Core Courses (72 Credits) must be completed:

- CCC1120 The Biblical Basis of Christian Counselling
- CCC1121 Human Development and Christian Counselling
- CCC1122 Counselling Skills
- CCC2120 Ethical and Legal Issues for Pastoral and Lay Counsellors
- CCC2121 Psychopathology and Spiritual Conflicts
- CCC2122 Relationships, Marriage and Family Counselling

### Four Electives (48 Credits):

Students may select any four of the following courses

- CCC1123 Crisis Intervention and Trauma Counselling
- CCC1124 Counselling — Abuse and Domestic Violence
- CCC1125 Wellness — Personal and Spiritual Growth
- CCC1126 Addictions and Co-dependency
- CCC2123 Congregational Care and Lay Counselling
- CCC2124 Gerontology and Counselling the Terminally Ill
- CCC2126 Advanced Counselling Skills Practicum
- CCC2127 Medicine, Health and Healing

**Minimum study requirements:** You are required to complete 48 credits of study every 12 months (commencing with date of enrolment).





### **How long does it take?**

The minimum duration is one year, but the average completion time for part-time students is two years. You have a maximum of three years to finish.

**Please note:** You are required to complete 48 credits every twelve months, commencing with the date of enrolment.

### **How much does it cost?**

Please consult the website <https://www.sats.edu.za> for pricing applicable to your region of the world. Kindly note that all fees paid to SATS are non-refundable and that prices are increased annually.

**Students enrolling for this programme will first need to complete the compulsory course for all SATS students: THE1120 Introduction to Theology**





# COURSE DESCRIPTIONS

## BIBLICAL STUDIES

- BIB 1121** **Essential Bible Study Principles:** provides an introduction to and overview of the New Testament. It also includes a vital and practical introduction to the fundamental principles of Biblical interpretation.
- BIB 1122** **1 Corinthians:** unpacks the meaning and contemporary significance of 1 Cor., which is possibly the most practical of Paul's letters.
- BIB 1123** **The Words and Works of Jesus:** a closer look at the life and ministry of Jesus that inform the church and Christian workers' witness.
- BIB 1124** **Old Testament Survey:** provides an overview of the Old Testament, helping the student to appreciate its significance and relevance for Christians today.
- BIB 2121** **Hermeneutics:** the very nature of Scripture as the Word of God is communication, and thus, requires interpretation. To grow in these skills, students need to learn the appropriate tools and processes of interpretation, and to practise the use of such tools and processes.
- BIB 2122** **The Pentateuch:** covers the historical background and authorship of the Pentateuch and the literary structure, major themes and theological implications of each book in the Pentateuch.
- BIB 2123** **The Historical Books:** provides an overview of the twelve Old Testament books from Joshua to Esther. This preliminary study of the Old Testament is aimed at introducing themes, purposes and historical background to the historical books.
- BIB 2124** **The Book of Acts:** an in-depth study of the exhilarating Acts of the Apostles, the Early Church and of the Holy Spirit. This subject paints a portrait of how Christianity burst onto the scenes of the Judea-Greco-Roman world.
- BIB 2125** **Paul's Letters:** a study of the Apostle Paul within the first century Greco-Roman context, survey of his thirteen letters and summary of his historical, theological and pastoral contribution to the Christian faith.
- BIB 3121** **The Wisdom Books:** covers the origin, nature and theological purpose of the Old Testament wisdom literature (Proverbs, Job, Ecclesiastes, Psalms and Song of Songs) and brings out the relevance of these biblical books for the faith and life of the church today.
- BIB 3122** **The General Letters:** provides an overview and thematic study of James, 1 and 2 Peter, 1 — 3 John, and Jude. This course is aimed at introducing themes, purposes, and historical background to these Epistles.
- BIB 3127** **The Prophetic Books:** presents a survey of the Old Testament prophetic books and shows the importance of understanding them in their original context and to appreciate the Abrahamic, Davidic and Mosaic covenants as preparation for the New Covenant.
- BIB 3128** **Genesis:** Genesis is the foundational book of the Bible, because it contains the basis for the whole story of Scripture and for all major biblical doctrines. Genesis must be understood for the mission of God to make sense.





## COURSE DESCRIPTIONS

- BIB 3129** **Romans:** Romans is considered Paul's most influential letter, and sometimes called 'the gospel according to Paul'. This course expounds the epistle under the auspices of its five major sections, dealing with condemnation, justification, sanctification, vindication, and transformation.
- BIB4123** **Ephesians:** This course will equip you to critically evaluate debates concerning the background issues of Ephesians, explain its structure and argument, interpret and apply selected passages and communicate its central message.
- OTS 4241** **Old Testament:** This course will help deepen your understanding of the Old Testament. It deals with the content, canon, history, geography, culture, hermeneutics, literature, and theology of the Old Testament (Units 1 to 7) and concludes with a research paper (Units 8-9).
- NTS 4241** **New Testament:** This course introduces you to the environment of early Christianity, the cultural and social world of the early church, the literature of the New Testament, critical issues of New Testament formation, and the theological message of the New Testament. You will gain a framework for further study of individual New Testament books and for appreciating the significance of these ancient, inspired writings for the life of the church.

### MISSIOLOGY

- MIS 2122** **Contemporary Issues in Missions:** this course is a study of the issues that are critical in missions today, helping you not only to see what is happening in our world today, but will also help you in developing a passion for missions in the 21st century.
- MIS 2123** **The Historical Perspective on Missions:** is a reflection on the history of missions, briefly discussing the expansion of Christianity throughout the last 2000 years.
- MIS 2124** **Introduction to Missions:** a basic introduction to the theology of Missions in the Bible, and lays down a challenge to Christians to consider becoming more involved in missions.
- MIS 3121** **World Religions:** provides an introductory level overview of five major world religions, namely, African Traditional Religions, Islam, Judaism, Hinduism, and Buddhism.
- MIS 3124** **Church Growth:** this course examines the basis for current church growth theory and practice and to compare them with Biblical principles. Students will also evaluate the theories and research findings of the main proponents within the church growth movement, and seek to find suitable applications of these concepts to church planting and church renewal.
- MIS 3125** **Islam:** compares the world's two largest faiths, introducing Islam by comparing and contrasting Allah with Yahweh, Mohammad with Christ, jihad with mission, and offering strategies to oppose Islamisation and share the gospel with Muslims.
- MIS 4121** **Missiology:** This course provides an advanced introduction to the academic discipline of Missiology (Unit 1) and to some of its research methods (Unit 2). Finally you will critically engage a current practice of mission (Unit 3).



## COURSE DESCRIPTIONS

**MIS4122 Understanding Islam:** This course provides a comprehensive introduction to Islam. The opening unit provides a general overview of Islam's origins, beliefs, and practices. The second unit examines the life of Muhammad in considerable detail, while the third compares the God revealed in the Qu'ran (Allah) with the God of the Bible. Unit 4 examines the mission of Islam (Islamisation), noting the objectives and strategies involved. The final unit presents some current approaches Christians use to present the gospel to Muslims.

**MIS4123 Critiquing Islam:** (Prerequisite: MIS3125 or MIS4122 or equivalent). This course affords students who have a solid understanding of Islam to deepen their understanding through an in-depth exploration of contemporary and controversial themes. You will be provided with a selection of themes, being required to select two and frame a research paper (argumentative essay) addressing each. Themes might include topics like the origins of Islam, the status of women in Islam, the legitimacy of insider movements as a mission strategy amongst Muslims, the Islamic Reformation, or the inspiration, transmission, and organisation of the Qu'ran.

### PRACTICAL THEOLOGY

**CYM 1126 Connecting with Children:** this course is about the observation of children, relationship building, their agenda, and the importance of play, story-telling and boundaries.

**CYM 2127 Walking with Wounded Children:** touches on issues of peace, healing, case study of an abused child, counselling with understanding, debriefing after trauma, a healing community.

**PRA 1121 Christian Relationships:** an introduction to the primacy of our relationship with God, and an overview of topics such as investigating different modes of worship, applying Parrett's principles of worship, reviewing the impact of the book, Power through Prayer by E. M. Bounds, and the biblical approach to family.

**PRA 1122 Introduction to Youth and Children's Ministry:** the course touches on issues such as a child-friendly church, guidance for parents and inclusion of child evangelism in a mission's conference, youth trends, and the various models of youth ministry and how they are applied in different youth groups.

**PRA 1124 Biblical Leadership 1:** explores the leadership models of Jesus and Paul, the leadership metaphors of servant, steward and shepherd, qualifications for church leadership, how leaders emerge, and much more.

**PRA 2121 Christian Counselling 1:** this course introduces the student to the field of pastoral care including its basis, goals, terminology, concepts and techniques. The student will learn how to use the Bible appropriately as a counselling tool for people struggling with personal issues such as anxiety, unforgiveness, depression, and illness. The course also teaches how to help people to cope better with child rearing, violence, abuse, crisis and grief.

**PRA 2122 The Pastoral Ministry:** the student is familiarised with the pastoral responsibilities of preaching, teaching, leading, equipping, administering, and many other tasks. The module also introduces the student to the important task of pastoral care and counselling in the context of the local church.

**PRA 2123 Homiletics:** addresses the need for preparation of the preacher as a necessary prerequisite to the preparation and delivery of the sermon, so both the preacher and the spoken message will have authority.



## COURSE DESCRIPTIONS

- PRA 2124 Children at Risk:** This course will help you to better understand what it would look like for children-at-risk to be meaningfully incorporated in the mission of the Church, something which a large part of the church has either ignored or under-emphasised for 2000 years. It will urge you to help correct those failings, by responding appropriately in your ministry.
- PRA 3121 Conflict and Reconciliation:** this course is an in-depth study of The Peacemaker: A Biblical Guide to Resolving Personal Conflict, bringing the Biblical principles of conflict management together in an extremely practical way.
- PRA 3124 Christian Counselling 2:** The general themes covered in this module are group and youth counselling singleness, pre-marital and marital counselling. The course is practically orientated and students will learn how to design a pre-marital counselling and marriage enrichment course and how to effectively counsel relating to themes such as divorce, remarriage and blended families.
- PRA 3125 Church Leadership:** examines many biblical, personal, and practical foundations for church leadership.
- PRA4122 Narrative Preaching:** This course explores the history, theoretical underpinning, and primary models of narrative preaching as a foundation for equipping you to learn some narrative methods of preaching. The heart of the course requires you to prepare and deliver sermons using both first-person and third-person narrative models. The course ends with you undertaking an evaluation of your narrative sermons, both a self-assessment and a congregational assessment.
- PRA 4121 Practical Theology:** This course provides an advanced introduction to Practical Theology as a theological discipline. It includes an overview of the discipline (Unit 1), a study of research models (Unit 2) and a research paper (Unit 3).

### SYSTEMATIC THEOLOGY

- THE 1120 Introduction to Theology:** is a foundational course for all undergraduate students, discussing the nature and value of theology, introducing some essential resources for theological study, and teaching you how to write theological papers.
- THE 1121 Christian Foundations:** covers the basic beliefs and spiritual practices of the Christian faith. Selective major themes including repentance, faith towards God, how to study the Bible, water baptism, the Lord's Supper, prayer, true worship and many more.
- THE 1122 Biblical Worldview:** The worldview course answers the major philosophical and practical questions of life from a biblical perspective. The course defines, explains and examine the consequences of a worldview.
- THE 1123 The Holy Spirit: What the Bible teaches:** helps students understand who the Holy Spirit is and the significant role He plays in both the Old and New Testament.
- THE 1124 Survey of Church History:** provides an overview of church history, demonstrating our connection to the past and applying its lessons to in our context; forms a framework for studies in doctrinal theology, missions and other subjects.
- THE 2121 The Doctrine of the Church:** examines the nature, purpose, organisation and ordinances of the church. It also surveys the important aspects of church life, together with exploring various other views of the church and its structures.



## COURSE DESCRIPTIONS

- THE 2122** **The Doctrine of Man and Sin:** this course explores who man is in relation to God, and the cause and consequences of our sin.
- THE 2123** **The Doctrine of Salvation:** covers Jesus' humanity and deity, his death, resurrection and glorification. It also deals with our conversion, justification, regeneration, sanctification and perseverance.
- THE 2124** **The Doctrine of God:** explores essential elements of the biblical revelation about the person and work of the Triune God, climaxing in considerations of how important a biblical portrait of God is if we are to live and minister in ways that faithfully represent Him.
- THE 3121** **The Doctrine of the Kingdom:** helps students to comprehend the nature of the Kingdom of God; discern Satan's actual present rights and status and survey the main categories of end-time doctrine.
- THE 3122** **The Doctrine of Revelation:** highlights the importance of understanding general and special revelation, including an appreciation of the various theories of inspiration, inerrancy, and authority of the Scriptures.
- THE 3123** **Apologetics:** a fairly detailed introduction to apologetics as a Christian discipline, and the various models of presentation and context. The modern contexts of apologetics (Post-modernism and the New Atheism) are also carefully considered.
- THE 3124** **Christian Ethics:** a module that deals with the moral implications of the gospel, introducing today's Christian worker to skills and tools that will help them engage postmodern society with clear Christian motives and persuasion.
- THE 3125** **Church History:** is a holistic view of church history periods, paying particular attention to major movement, leaders and their contributions to Christianity, and the origin and distinctiveness of prominent Christian denominations.
- THE 3126** **African Theology:** shows how theology has been approached by Africans. The course exposes the student to African Traditional Religion and the role it and Western theology have played in the development of African theology.
- THE 4241** **Systematic Theology:** This course provides an orientation to the field of Systematic Theology. It includes an overview of major doctrines of the Christian faith (Unit 1), research methods (Unit 2) and a research paper (Unit 3).
- THE4123** **Child Theology:** This course explores the concept of doing theology with "the child in the midst". This is a relatively new discipline, which desperately demands the church's attention.
- THE 4242** **Science and Theology:** shows the importance of dialogue between theology and the natural sciences if we are to understand God's Word and his world correctly. The objective is to aid the student in gaining a clear picture of the complexities of the debate and to affirm the validity and rationality of believing in God and the Bible despite the hostile voices claiming the converse.



# COURSE DESCRIPTIONS

## BIBLICAL LANGUAGES

- BGK 1121** **Biblical Greek 1A:** In this first of four courses on Greek you learn about the Greek noun system (nouns, adjectives, and pronouns), and begin to translate simple verses from Greek to English.
- BGK 1122** **Biblical Greek 1B:** In this second of four courses on Greek you learn about the Greek indicative verb system, and proceed to more advanced translation questions.
- BGK 2121** **Biblical Greek 2A:** is the third of four Greek courses, covering the remainder of the verb system (participles, subjunctives, imperatives, and infinitives).
- BGK 2122** **Biblical Greek 2B:** is the last of four Greek courses, during which we apply all that we have learned to study five New Testament passages in Greek.
- BHB 1121** **Biblical Hebrew 1A:** This is the first of two modules covering the basics of Biblical Hebrew grammar. In this module the student will learn the Hebrew nouns, pronouns, adjectives, the construct chain, and the entirety of the Qal verb stem. Some focus will be given to communicative function in modern Hebrew.
- BHB 1122** **Biblical Hebrew 1B:** This is the second of two modules covering the basics of Biblical Hebrew grammar. In this module the student will learn the Hebrew derived stems and be exposed to some of the methods and tools used in the study of north western Semitic languages and the Hebrew Bible.

## ORIENTATION, RESEARCH AND OTHER COURSES

- GEN 4121** **Theological Orientation:** This is the first, compulsory course in the BTh Honours programme. It provides you with an introduction to SATS, its services and support systems, as well as to theological research and academic writing. This course will help you derive maximum benefit from your studies at SATS.
- GEN 4122** **Directed Theological Reading:** This elective course exposes you to current scholarship in a specific field of theological studies or a combination of theological fields. You will be given a list of resources to read, analyse, interpret, compare and apply. Assessment is done through an online oral examination where you will demonstrate your knowledge of the prescribed reading material.
- RES 4122** **Research Methodology:** This is an elective course in the BTh Honours programme, designed to sharpen your understanding of theological research methodology. It is a prerequisite for the following course.
- RES 4241** **Research Project:** This is an elective course in the BTh Honours programme in which you apply a specific research method in your research on one of the prescribed research topics. The course culminates in a research report of around 7 000 words that includes references to at least 15 scholarly works.
- MRS 5240** **Research Concept Development:** This is the first, compulsory course in the MTh programme. It introduces you to advanced theological studies and the most important research methodologies. It guides you through a process of developing a research concept that will form the basis of your research project (for Coursework students) or your full thesis.



## CONTACT DETAILS

<b>Postal</b>	South African Theological Seminary PO Box 98988, Sloane Park, 2152 South Africa
<b>Physical</b>	37 Grosvenor Road Bryanston, 2191 South Africa
<b>GPS Coordinates</b>	S 26,052194° E 28,006309°
<b>Telephone</b>	+27 11 234 4440
<b>Helpdesk</b>	+27 11 234 4440
<b>Fax</b>	+27 11 234 4445
<b>E-mail</b>	<a href="mailto:study@sats.edu.za">study@sats.edu.za</a>
<b>Website</b>	<a href="http://www.sats.edu.za">www.sats.edu.za</a>

## BANKING DETAILS

<b>Name of Bank</b>	First National
<b>Branch</b>	Fourways Mall
<b>Branch Number</b>	251655
<b>Name of Account</b>	SA Theological Seminary
<b>Account #</b>	51321182366
<b>Swift</b>	FIRNZAJJ

To make payment online, simply click on **Pay Online** on the homepage <https://www.sats.edu.za>





# TIMETABLE

The Seminary's academic year runs from 1 February 2019 to 31 January 2020. The year is divided into four three-month terms.

Term 1	Term 2	Term 3	Term 4
1 Feb to 30 Apr	1 May to 31 Jul	1 Aug to 31 Oct	1 Nov to 31 Jan

Table 1: Four Terms

The majority of undergraduate courses in the Higher Certificate in Christian Life (HCCL), Higher Certificate in Christian Counselling (HCCC) and the Bachelor of Theology (BTh) programmes run over a three-month term. Most courses are offered twice each year, either in Term 1 and 3 or in Term 2 and 4.

You should select at least one course from each timeslot — that is, one each from Term 1, 2, 3 and 4 for the academic year. You are required to complete at least four courses each year.

## Language Courses

There are 4 Greek and Hebrew language courses. Each course is run online over a 6-month period.

To reap the full benefits of the Biblical Languages courses, you will need to take all four Greek or Hebrew courses.

BGK1121	Biblical Greek 1A	Term 1
BGK1122	Biblical Greek 1B	Term 3
BGK2121	Biblical Greek 2A	Term 1
BGK2122	Biblical Greek 2B	Term 3
BHB1121	Biblical Hebrew 1A	Term 3
BHB1122	Biblical Hebrew 1B	Term 1
BHB2121	Biblical Hebrew 2A	Term 3
BHB2122	Biblical Hebrew 2B	Term 1





# TIMETABLE

## Bachelor of Theology (and Higher Certificate in Christian Life)

**Term 1** (1 February to 30 April) and **Term 3** (1 August to 31 October)

BIB1122	1 Corinthians
BIB1123	The Words and Works of Jesus
CYM1126	Connecting with Children — <i>Prerequisite for CYM2127</i>
PRA1122	Introduction to Youth and Children's Ministry
THE1120	Introduction to Theology
THE1121	Christian Foundations
THE1123	The Holy Spirit: What the Bible teaches
BIB2121	Hermeneutics — <i>Prerequisite for PRA2123</i>
BIB2122	The Pentateuch
MIS2122	Contemporary Issues in Missions — <i>Term 3 only</i>
MIS2123	Historical Perspective on Missions — <i>Term 1 only</i>
PRA2121	Christian Counselling 1 — <i>Prerequisite for PRA3124</i>
PRA2122	Pastoral Ministry
THE2122	The Doctrine of Man and Sin — <i>Prerequisite for THE2123</i>
THE2124	The Doctrine of God — <i>Term 3 only</i>
BIB3121	The Wisdom Books
BIB3127	The Prophetic Books
BIB3129	Romans
MIS3125	Islam — <i>Term 1 only</i>
PRA3121	Conflict and Reconciliation
PRA3125	Church Leadership
THE3121	The Doctrine of the Kingdom
THE3123	Apologetics
THE3125	Church History — <i>Cannot take this course if you have taken THE1124</i>

---

## Bachelor of Theology (and Higher Certificate in Christian Life)

**Term 2** (1 May to 31 July) and **Term 4** (1 November to 31 January)

BIB1121	Essential Bible Study Principles
BIB1124	Old Testament Survey
PRA1121	Christian Relationships
PRA1124	Biblical Leadership 1
THE1120	Introduction to Theology
THE1122	Biblical Worldview
THE1124	Survey of Church History
BIB2123	Historical Books
BIB2124	Book of Acts
BIB2125	Paul's Letters
CYM2127	Walking with Wounded Children — <i>Prerequisite CYM1126</i>
MIS2124	Introduction to Missions
PRA2123	Homiletics
PRA2124	Children at Risk
THE2121	The Doctrine of the Church







# TIMETABLE

THE2123	The Doctrine of Salvation — <i>Prerequisite THE2122</i>
BIB3122	The General Letters
BIB3128	Genesis
MIS3121	World Religions
MIS3124	Church Growth – <i>Term 4 only</i>
PRA3124	Christian Counselling 2 — <i>Prerequisite PRA2121</i>
PRA3126	Church Administration
THE3122	The Doctrine of Revelation
THE3124	Christian Ethics
THE3126	African Theology — <i>Term 2 only</i>

---

## Higher Certificate in Christian Counselling

### Term 1

CCC1120	The Biblical Basis of Christian Counselling — <i>Prerequisite for all modules</i>
CCC1121	Human Development and Christian Counselling
CCC2121	Psychopathology and Spiritual Conflicts
CCC1123	Crisis & Trauma Counselling
CCC1124	Abuse and Domestic Violence
CCC2126	Advanced Counselling Skills - <i>Semester course</i> — <i>Prerequisite is CCC1122</i>

### Term 2

CCC1120	The Biblical Basis of Christian Counselling — <i>Prerequisite for all modules</i>
CCC2120	Ethical & Legal Issues for Pastoral and Lay Counsellors — <i>Prerequisite for CCC1122</i>
CCC2122	Relationships, Marriage and Family Counselling
CCC1122	Counselling Skills Practicum — <i>Prerequisite for CCC2126</i>
CCC2123	Congregational Care
CCC1125	Wellness - Personal & Spiritual Growth

### Term 3

CCC1120	The Biblical Basis of Christian Counselling — <i>Prerequisite for all modules</i>
CCC1121	Human Development and Christian Counselling
CCC2121	Psychopathology and Spiritual Conflicts
CCC1122	Counselling Skills Practicum — <i>Prerequisite for CCC2126</i>
CCC2124	Gerontology & Terminally Ill
CCC1126	Addictions & Co-dependency
CCC2126	Advanced Counselling Skills - <i>Semester course</i> — <i>Prerequisite is CCC1122</i>

### Term 4

CCC1120	The Biblical Basis of Christian Counselling — <i>Prerequisite for all modules</i>
CCC2120	Ethical and Legal Issues for Pastoral and Lay Counsellors — <i>Prerequisite for CCC1122</i>
CCC2122	Relationships, Marriage and Family Counselling
CCC2127	Medicine, Health & Healing





# TIMETABLE

## Bachelor of Theology Honours

**Term 1** (1 February to 30 April) and **Term 3** (1 August to 31 October)

### 12 Credit Courses (3 months)

GEN4121	Theological Orientation
MIS4122	Understanding Islam
PRA4121	Practical Theology
PRA4122	Narrative Preaching

### 24 Credit Courses (6 months)

NTS4241	Testament
OTS4241	Old Testament
RES4241	Research Project — <i>Prerequisite RES4122</i>
THE4241	Systematic Theology
THE4242	Science and Theology

**Term 2** (1 May to 31 July) and **Term 4** (1 November to 31 January)

### 12 Credit Courses (3 months)

GEN4121	Theological Orientation
BIB4123	Ephesians
GEN4122	Directed Theological Reading
MIS4121	Missiology
MIS4123	Critiquing Islam — <i>Prerequisite MIS4122</i>
RES4122	Research Methodology
THE4123	Child Theology





## NOTES

---

---

---

---

---

---

---

---

---

---

---

---

---

---

---

---

---

---

---

---

---

---

---

---

---

---

---

---

---

---



